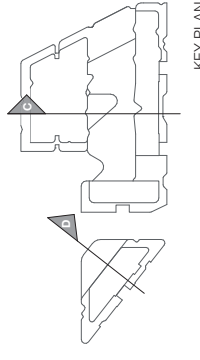
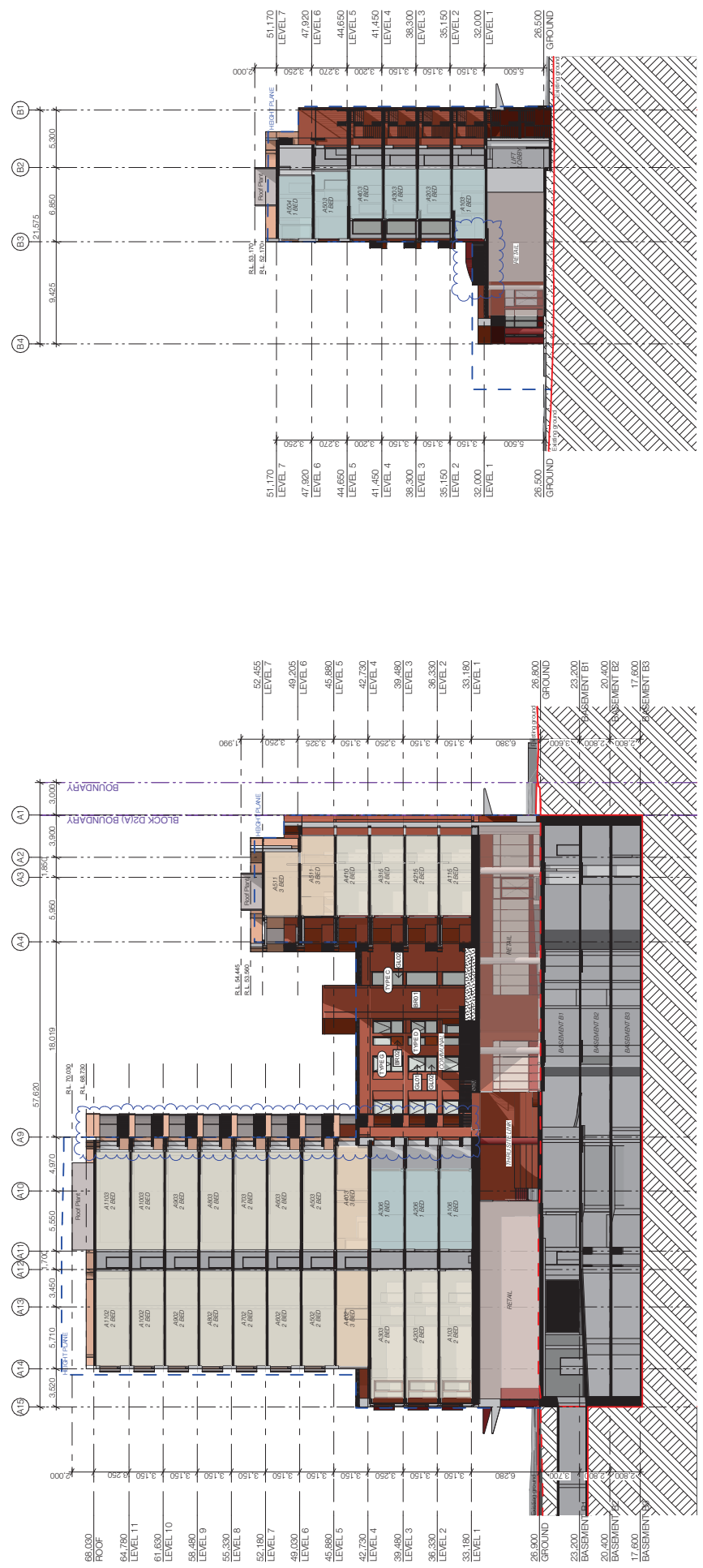


Attachment D2

**Architectural Drawings
(Bourke Street North and Bourke Street
South Buildings)
Part Two**



KEY PLAN



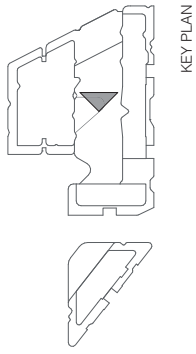
SECTION C AND D SECTION D SECTION C 1:400 1:400

<p>REV</p> <p>A B C D E</p>	<p>DISCIPLINE</p> <p>DEVELOPER APPLICATION COUNCIL RESPONSES COUNCIL RESPONSES COUNCIL RESPONSES</p>	<p>DATE</p> <p>10/1/21 20/02/22 20/02/22 27/02/22</p>	<p>ARCHITECT</p> <p>FIELDWORK</p> <p>MHNDU Design Urban Pty Ltd 309/19th St, Waverley NSW 1502 T: 61 (0)2 9011 2801 E: fieldwork@fieldwork.com.au</p>	<p>ARCHITECT</p> <p>MHNDU DESIGN</p> <p>Brain Mayson - 18/04/2017 T: 61 (0)2 9011 1111 E: brain@mhndu.com.au</p>	<p>NOTES:</p> <p>EXISTING BOUNDARY EXISTING FLOOR LEVEL NEW FLOOR LEVEL TO BE REVEALED TO BE EXPOSED TO BE COVERED TO BE RELOCATED TO BE DELETED TO BE ADDED</p>	<p>DRAWING TITLE:</p> <p>SECTION C AND D</p> <p>PROJECT ADDRESS:</p> <p>903-921 BOURKE STREET, WATERLOO NSW 2017</p>	<p>CHECKED BY:</p> <p>FVA/MHNDU</p> <p>PROJECT NO:</p> <p>19-030</p> <p>REVISION:</p> <p>D2.BSN-S.40.03</p>	<p>SCALE:</p> <p>1:400/A3</p> <p>ISSUE DATE:</p> <p>27/10/22</p> <p>DWG NUMBER:</p> <p>D2.BSN-S.40.03</p>
--	---	--	---	--	---	--	--	--

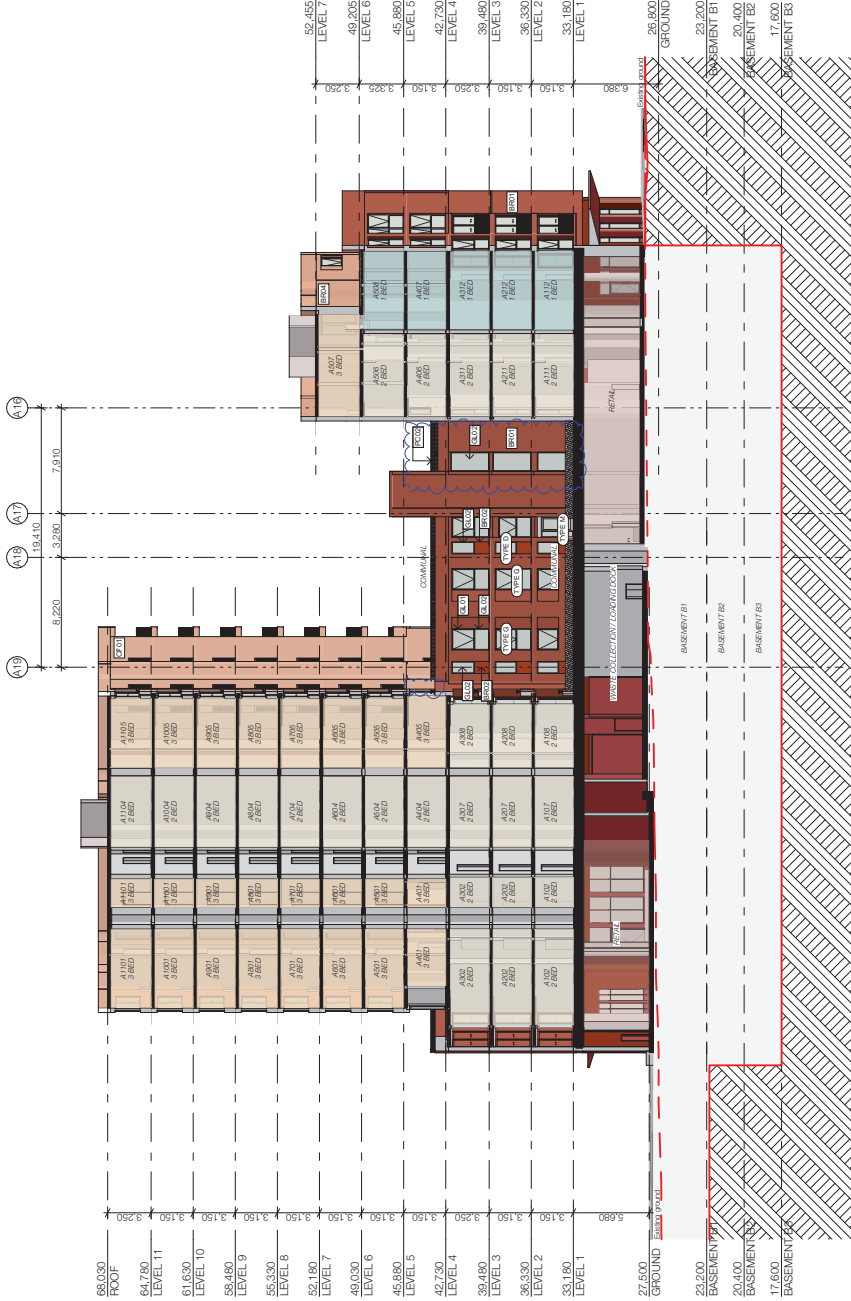
MATERIALS KEY

REFER EXTERNAL FINISHES SCHEDULE FOR FURTHER DETAILS

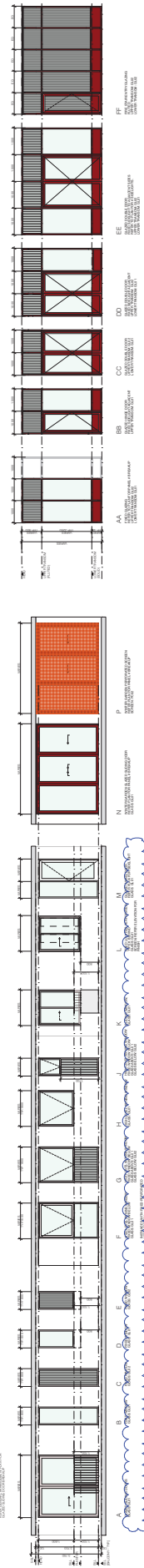
- BR01 BRICK - STRETCHER BOND
- BR02 BRICK - SOLID PERIOD
- BR03 BRICK - COURSE/BAND BOND - EVERY SECOND COURSE RECESSED
- BR04 BRICK - STRETCHER BOND
- BR05 BRICK - SOLID PERIOD
- BR06 BRICK - COURSE/BAND BOND - EVERY SECOND COURSE RECESSED
- PO01 POWDERCOAT - SILVER
- PO02 POWDERCOAT - TERRACOTTA
- PO03 POWDERCOAT - GREY
- GL01 GLASS - CLEAR
- GL02 GLASS - FLUTED
- GL03 GLASS - TINTED
- SM01 STAINLESS STEEL
- SM02 SPANDED METAL MESH
- MS01 REFORMED MESH SCREEN - POZ
- MS02 REFORMED MESH SCREEN - POZ



KEY PLAN



COURTYARD SOUTH - D2(A) SECTION 1:400



WINDOW LEGEND

DISCUSSION

DATE	10/12/17
A	20/02/22
B	20/02/22
C	20/02/22
D	27/02/22
E	

ARCHITECT:
FIELDWORK
 MHD Design Layer Pty Ltd
 500 Pitt Street
 Sydney NSW 2000
 T +61 (0)2 9011 1111
 F +61 (0)2 9011 2801
 info@fieldwork.com.au

MHNDU NION
 MHD Design Layer Pty Ltd
 500 Pitt Street
 Sydney NSW 2000
 T +61 (0)2 9011 1111
 F +61 (0)2 9011 2801
 info@mhndu.com.au

NOTES:

- 1. ALL FINISHES TO BE IN ACCORDANCE WITH THE FINISHES SCHEDULE.
- 2. ALL FINISHES TO BE IN ACCORDANCE WITH THE FINISHES SCHEDULE.
- 3. ALL FINISHES TO BE IN ACCORDANCE WITH THE FINISHES SCHEDULE.
- 4. ALL FINISHES TO BE IN ACCORDANCE WITH THE FINISHES SCHEDULE.
- 5. ALL FINISHES TO BE IN ACCORDANCE WITH THE FINISHES SCHEDULE.
- 6. ALL FINISHES TO BE IN ACCORDANCE WITH THE FINISHES SCHEDULE.
- 7. ALL FINISHES TO BE IN ACCORDANCE WITH THE FINISHES SCHEDULE.
- 8. ALL FINISHES TO BE IN ACCORDANCE WITH THE FINISHES SCHEDULE.
- 9. ALL FINISHES TO BE IN ACCORDANCE WITH THE FINISHES SCHEDULE.
- 10. ALL FINISHES TO BE IN ACCORDANCE WITH THE FINISHES SCHEDULE.
- 11. ALL FINISHES TO BE IN ACCORDANCE WITH THE FINISHES SCHEDULE.
- 12. ALL FINISHES TO BE IN ACCORDANCE WITH THE FINISHES SCHEDULE.
- 13. ALL FINISHES TO BE IN ACCORDANCE WITH THE FINISHES SCHEDULE.
- 14. ALL FINISHES TO BE IN ACCORDANCE WITH THE FINISHES SCHEDULE.
- 15. ALL FINISHES TO BE IN ACCORDANCE WITH THE FINISHES SCHEDULE.
- 16. ALL FINISHES TO BE IN ACCORDANCE WITH THE FINISHES SCHEDULE.
- 17. ALL FINISHES TO BE IN ACCORDANCE WITH THE FINISHES SCHEDULE.
- 18. ALL FINISHES TO BE IN ACCORDANCE WITH THE FINISHES SCHEDULE.
- 19. ALL FINISHES TO BE IN ACCORDANCE WITH THE FINISHES SCHEDULE.
- 20. ALL FINISHES TO BE IN ACCORDANCE WITH THE FINISHES SCHEDULE.
- 21. ALL FINISHES TO BE IN ACCORDANCE WITH THE FINISHES SCHEDULE.
- 22. ALL FINISHES TO BE IN ACCORDANCE WITH THE FINISHES SCHEDULE.
- 23. ALL FINISHES TO BE IN ACCORDANCE WITH THE FINISHES SCHEDULE.
- 24. ALL FINISHES TO BE IN ACCORDANCE WITH THE FINISHES SCHEDULE.
- 25. ALL FINISHES TO BE IN ACCORDANCE WITH THE FINISHES SCHEDULE.
- 26. ALL FINISHES TO BE IN ACCORDANCE WITH THE FINISHES SCHEDULE.
- 27. ALL FINISHES TO BE IN ACCORDANCE WITH THE FINISHES SCHEDULE.
- 28. ALL FINISHES TO BE IN ACCORDANCE WITH THE FINISHES SCHEDULE.
- 29. ALL FINISHES TO BE IN ACCORDANCE WITH THE FINISHES SCHEDULE.
- 30. ALL FINISHES TO BE IN ACCORDANCE WITH THE FINISHES SCHEDULE.

DRAWING TITLE:
SECTION COURTYARD SOUTH - D2(A)
PROJECT ADDRESS:
903-921 Bourke Street, Waterloo NSW 2017

CHECKED: FWA/HNDU
PROJECT NO: 19-030
ISSUE DATE: 27/10/22
REVISION:
 DWG NUMBER: D2.BSN.S.41.02
 DRAW NUMBER: 19-030

DISCUSSION

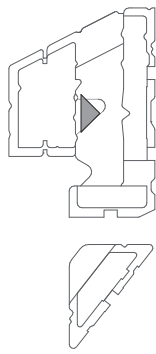
DATE	10/12/17
A	20/02/22
B	20/02/22
C	20/02/22
D	27/02/22
E	

ARCHITECT:
FIELDWORK
 MHD Design Layer Pty Ltd
 500 Pitt Street
 Sydney NSW 2000
 T +61 (0)2 9011 1111
 F +61 (0)2 9011 2801
 info@fieldwork.com.au

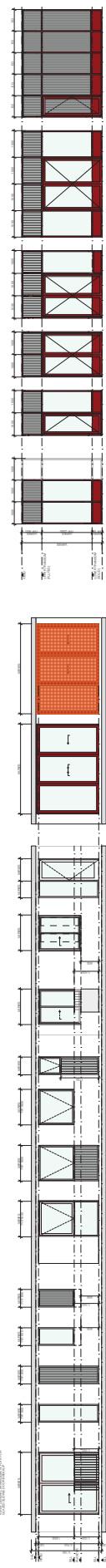
MHNDU NION
 MHD Design Layer Pty Ltd
 500 Pitt Street
 Sydney NSW 2000
 T +61 (0)2 9011 1111
 F +61 (0)2 9011 2801
 info@mhndu.com.au

- BR01** BRICK - STRETCHER BOND
- BR02** BRICK - BOLDER BOND
- BR03** BRICK - COURSER BOND - EVERY SECOND COURSE RECESSED
- PO01** POWDERCOAT - SILVER
- PO02** POWDERCOAT - TERRACOTTA
- PO03** POWDERCOAT - GREY
- GL01** GLASS - CLEAR
- GL02** GLASS - FLUTED
- SM01** SPANNED METAL MESH
- AS01** ANODISED ALUMINIUM
- AS02** REFORMED MESH SCREEN - POZ
- AS03** REFORMED MESH SCREEN - POI

KEY PLAN

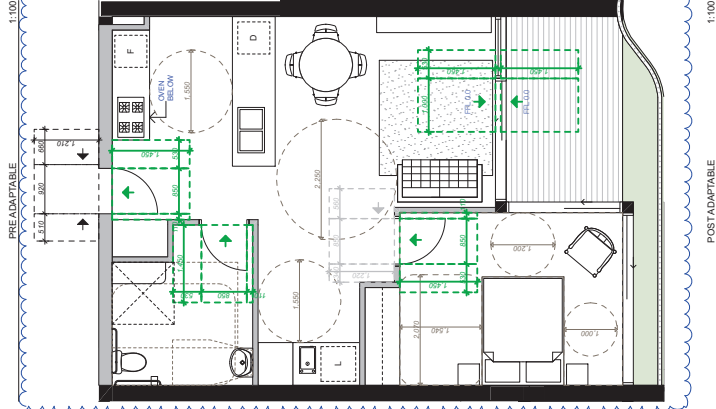
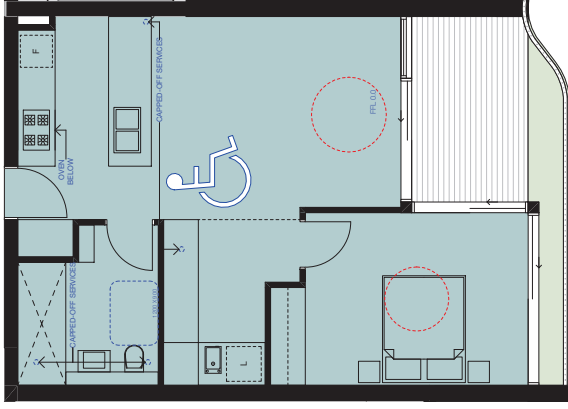


SECTION
 COURTYARD WEST - D2(A)
 SCALE: 1:400

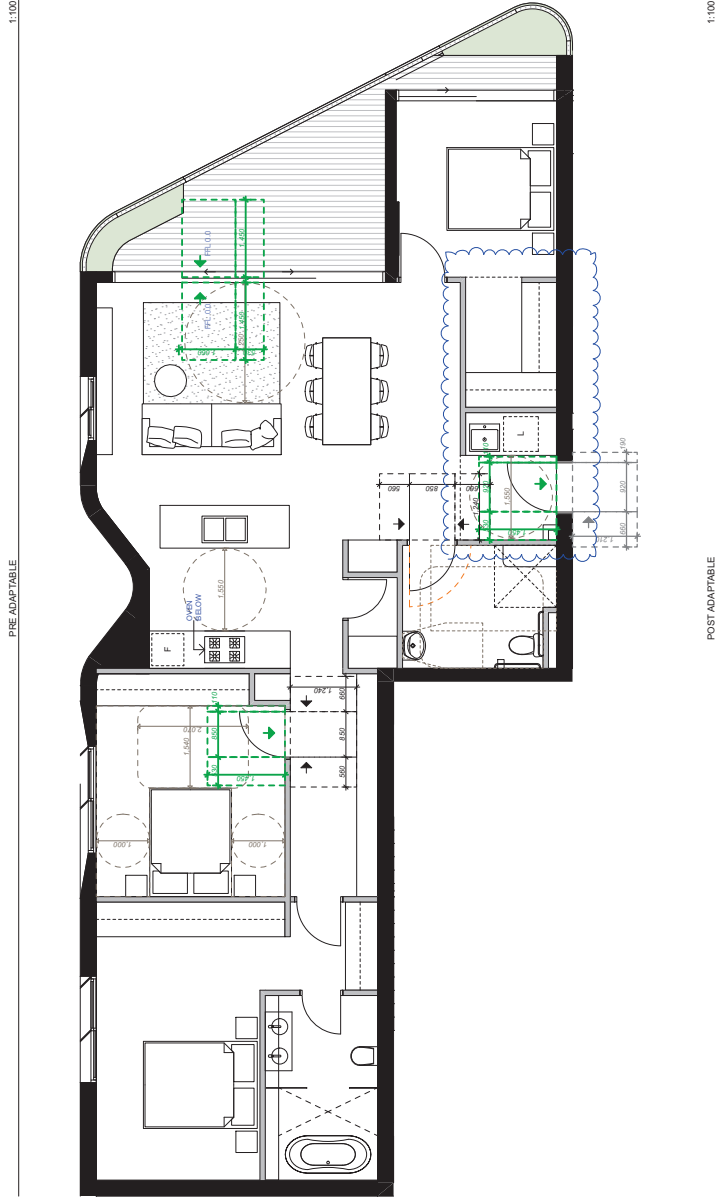
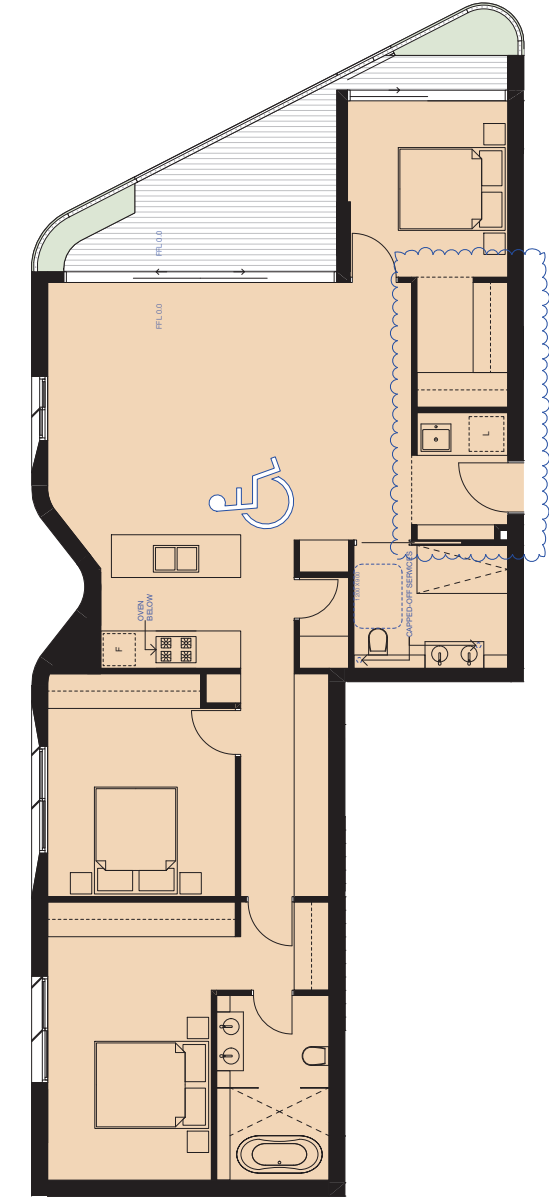


NOTES:
 1. EXISTING WINDOW SCHEDULE TO REMAIN UNLESS OTHERWISE SPECIFIED.
 2. WINDOW SCHEDULE TO BE SUPPLIED BY THE CLIENT.
 3. WINDOW SCHEDULE TO BE SUPPLIED BY THE CLIENT.
 4. WINDOW SCHEDULE TO BE SUPPLIED BY THE CLIENT.
 5. WINDOW SCHEDULE TO BE SUPPLIED BY THE CLIENT.
 6. WINDOW SCHEDULE TO BE SUPPLIED BY THE CLIENT.
 7. WINDOW SCHEDULE TO BE SUPPLIED BY THE CLIENT.
 8. WINDOW SCHEDULE TO BE SUPPLIED BY THE CLIENT.
 9. WINDOW SCHEDULE TO BE SUPPLIED BY THE CLIENT.
 10. WINDOW SCHEDULE TO BE SUPPLIED BY THE CLIENT.

<p>DISCUSSION</p> <p>A DEVELOPER APPLICATION B COUNCIL RESPONSE C COUNCIL RESPONSE D COUNCIL RESPONSE E COUNCIL RESPONSE</p>	<p>ARCHITECT: FIELDWORK MHI Design Urban Pty Ltd Suite 101/100 Pitt Street Sydney NSW 2000 T: +61 (0)2 9081 2801 F: +61 (0)2 9081 1111 www.fieldwork.com.au</p>	<p>ARCHITECT: MHNDU NION MHI Design Urban Pty Ltd Suite 101/100 Pitt Street Sydney NSW 2000 T: +61 (0)2 9081 2801 F: +61 (0)2 9081 1111 www.mhndunion.com.au</p>	<p>DRAWING TITLE: SECTION COURTYARD WEST - D2(A) PROJECT ADDRESS: 903-921 BOURKE STREET, WATERLOO NSW 2017</p>	<p>CHECKED BY: FVAMHNDU</p> <p>SCALE: 1:400/A3</p> <p>ISSUE DATE: 27/10/22</p> <p>DWG NUMBER: D2.BSN-S.41.04</p> <p>REVISION: E</p>
---	--	---	---	---



ADAPTABLE UNITS:
A106



ADAPTABLE UNITS:
A107

ADAPTABLE UNITS:
A501, A601, A701, A801,
A901, A1001, A1101

REV	DISCUSSION	DATE	ARCHITECT
A	DEVELOPER APPLICATION	10/1/21	FIELDWORK
B	COUNCIL RESPONSES	2/10/22	MHNDU NION
C	COUNCIL RESPONSES	2/10/22	MHNDU NION
D	COUNCIL RESPONSES	2/10/22	MHNDU NION
E	COUNCIL RESPONSES	2/10/22	MHNDU NION
F	COUNCIL RESPONSES	1/1/22	MHNDU NION

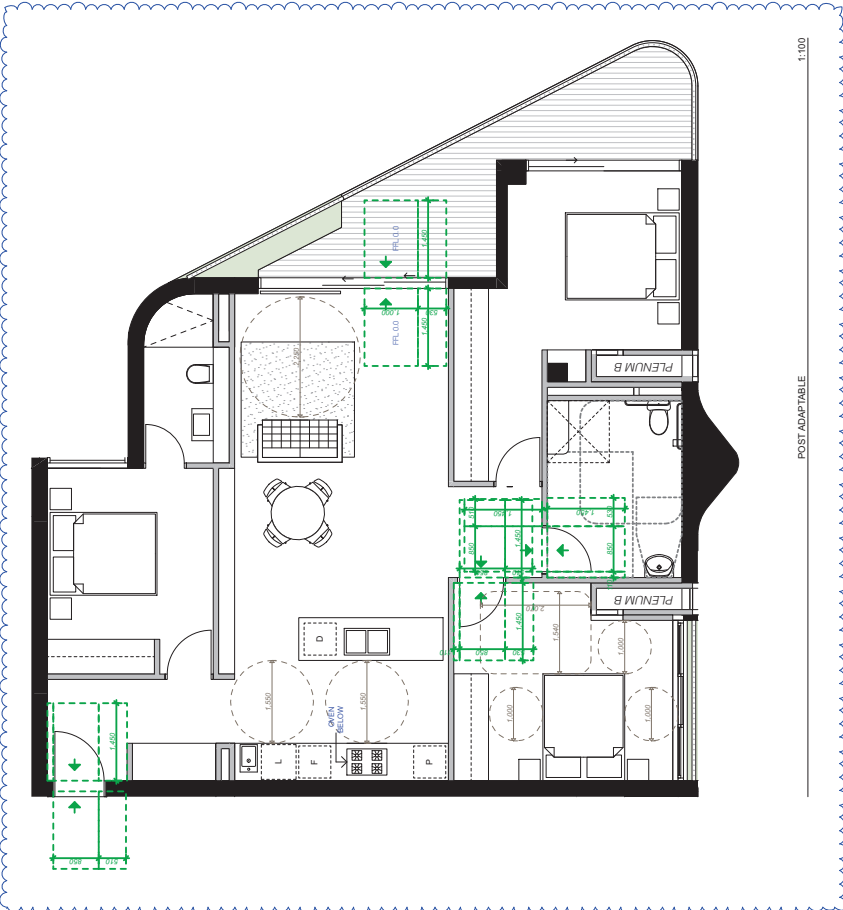
FIELDWORK
MHNDU NION
MHN Design Layer Pty Ltd
Suite 101/100 Bourke Street
Sydney NSW 2009
T: +61 (0)2 9210 1111
E: info@mhndu.com.au
© 2022 MHNDU NION

NOTES:
1. ALL DIMENSIONS ARE TO FACE UNLESS OTHERWISE SPECIFIED.
2. ALL DIMENSIONS ARE TO FACE UNLESS OTHERWISE SPECIFIED.
3. ALL DIMENSIONS ARE TO FACE UNLESS OTHERWISE SPECIFIED.
4. ALL DIMENSIONS ARE TO FACE UNLESS OTHERWISE SPECIFIED.
5. ALL DIMENSIONS ARE TO FACE UNLESS OTHERWISE SPECIFIED.
6. ALL DIMENSIONS ARE TO FACE UNLESS OTHERWISE SPECIFIED.
7. ALL DIMENSIONS ARE TO FACE UNLESS OTHERWISE SPECIFIED.
8. ALL DIMENSIONS ARE TO FACE UNLESS OTHERWISE SPECIFIED.
9. ALL DIMENSIONS ARE TO FACE UNLESS OTHERWISE SPECIFIED.
10. ALL DIMENSIONS ARE TO FACE UNLESS OTHERWISE SPECIFIED.

ADAPTABLE APARTMENTS D2A-B
DRAWING TITLE:
PROJECT ADDRESS:
303-921 BOURKE STREET,
WATERLOO NSW 2017
SCALE:
1:100/A3
DRAWN BY:
FV-MHNDU
ISSUE DATE:
27/10/22
PROJECT NO:
19-030
REVISION:
D2.BS.NS.77.02
DWG NUMBER:
FV-MHNDU



PRE-ADAPTABLE
1:100



POST-ADAPTABLE
1:100

ADAPTABLE UNITS:
A505, A605, A705, A805,
A905, A1005, A1105

DRAWING TITLE:
ADAPTABLE APARTMENTS D2A-
B
PROJECT ADDRESS:
903-921 BOURKE STREET,
WATERLOO NSW 2017

CHECKED BY: FVAMHINDU
DRAWN BY: FVAMHINDU
SCALE: 1:100@A3
PROJECT NO: 19-030
ISSUE DATE: 27/10/22
DWG NUMBER: D2.BS.NS.77.03
REVISION:
F

NOTES:

- EXISTING FLOOR FINISHES TO REMAIN UNLESS OTHERWISE SPECIFIED.
- ALL DIMENSIONS ARE TO FACE UNLESS OTHERWISE SPECIFIED.
- ALL WALLS TO BE CONCRETE UNLESS OTHERWISE SPECIFIED.
- ALL CEILING TO BE CONCRETE UNLESS OTHERWISE SPECIFIED.
- ALL FLOORING TO BE POLISHED TERRAZZO UNLESS OTHERWISE SPECIFIED.
- ALL GLASS TO BE TINTED UNLESS OTHERWISE SPECIFIED.
- ALL WINDOWS TO BE ALUMINIUM FRAME UNLESS OTHERWISE SPECIFIED.
- ALL DOORS TO BE ALUMINIUM FRAME UNLESS OTHERWISE SPECIFIED.
- ALL MIRRORS TO BE CONCRETE UNLESS OTHERWISE SPECIFIED.
- ALL BATHS TO BE CONCRETE UNLESS OTHERWISE SPECIFIED.
- ALL TOILETS TO BE CONCRETE UNLESS OTHERWISE SPECIFIED.
- ALL SINKS TO BE CONCRETE UNLESS OTHERWISE SPECIFIED.
- ALL STOVES TO BE CONCRETE UNLESS OTHERWISE SPECIFIED.
- ALL REFRIGERATORS TO BE CONCRETE UNLESS OTHERWISE SPECIFIED.
- ALL FREEZERS TO BE CONCRETE UNLESS OTHERWISE SPECIFIED.
- ALL Ovens TO BE CONCRETE UNLESS OTHERWISE SPECIFIED.
- ALL DISHWASHERS TO BE CONCRETE UNLESS OTHERWISE SPECIFIED.
- ALL CUPBORDS TO BE CONCRETE UNLESS OTHERWISE SPECIFIED.
- ALL DRAWERS TO BE CONCRETE UNLESS OTHERWISE SPECIFIED.
- ALL CABINETS TO BE CONCRETE UNLESS OTHERWISE SPECIFIED.
- ALL VANITIES TO BE CONCRETE UNLESS OTHERWISE SPECIFIED.
- ALL TUBS TO BE CONCRETE UNLESS OTHERWISE SPECIFIED.
- ALL SHOWER TRAYS TO BE CONCRETE UNLESS OTHERWISE SPECIFIED.
- ALL TILES TO BE CONCRETE UNLESS OTHERWISE SPECIFIED.
- ALL GRATES TO BE CONCRETE UNLESS OTHERWISE SPECIFIED.
- ALL BALCONY FLOORS TO BE CONCRETE UNLESS OTHERWISE SPECIFIED.
- ALL BALCONY RAILS TO BE ALUMINIUM UNLESS OTHERWISE SPECIFIED.
- ALL BALCONY GLASS TO BE TINTED UNLESS OTHERWISE SPECIFIED.
- ALL BALCONY DOORS TO BE ALUMINIUM UNLESS OTHERWISE SPECIFIED.
- ALL BALCONY WALLS TO BE CONCRETE UNLESS OTHERWISE SPECIFIED.
- ALL BALCONY CEILING TO BE CONCRETE UNLESS OTHERWISE SPECIFIED.
- ALL BALCONY FLOORS TO BE POLISHED TERRAZZO UNLESS OTHERWISE SPECIFIED.
- ALL BALCONY RAILS TO BE ALUMINIUM UNLESS OTHERWISE SPECIFIED.
- ALL BALCONY GLASS TO BE TINTED UNLESS OTHERWISE SPECIFIED.
- ALL BALCONY DOORS TO BE ALUMINIUM UNLESS OTHERWISE SPECIFIED.
- ALL BALCONY WALLS TO BE CONCRETE UNLESS OTHERWISE SPECIFIED.
- ALL BALCONY CEILING TO BE CONCRETE UNLESS OTHERWISE SPECIFIED.
- ALL BALCONY FLOORS TO BE POLISHED TERRAZZO UNLESS OTHERWISE SPECIFIED.

ADAPTATION TO CITY APARTMENT DECLARATION:

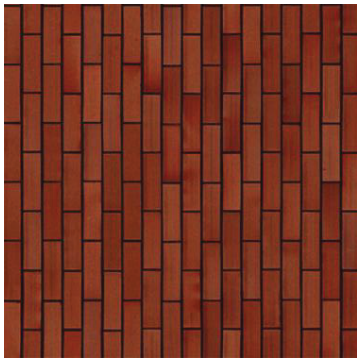
- CLASSE 2.1.1. MATERIAL OF BUILDING CONSTRUCTION
- CLASSE 2.1.2. MATERIAL OF WALL CONSTRUCTION
- CLASSE 2.1.3. MATERIAL OF CEILING CONSTRUCTION
- CLASSE 2.1.4. MATERIAL OF FLOOR CONSTRUCTION
- CLASSE 2.1.5. MATERIAL OF DOOR CONSTRUCTION
- CLASSE 2.1.6. MATERIAL OF WINDOW CONSTRUCTION
- CLASSE 2.1.7. MATERIAL OF BALCONY CONSTRUCTION
- CLASSE 2.1.8. MATERIAL OF RAMP CONSTRUCTION
- CLASSE 2.1.9. MATERIAL OF ELEVATOR CONSTRUCTION
- CLASSE 2.1.10. MATERIAL OF STAIR CONSTRUCTION
- CLASSE 2.1.11. MATERIAL OF PLANT ROOM CONSTRUCTION
- CLASSE 2.1.12. MATERIAL OF SERVICE YARD CONSTRUCTION
- CLASSE 2.1.13. MATERIAL OF COMMON AREA CONSTRUCTION
- CLASSE 2.1.14. MATERIAL OF EXTERNAL CONSTRUCTION
- CLASSE 2.1.15. MATERIAL OF EXTERNAL FINISHES CONSTRUCTION
- CLASSE 2.1.16. MATERIAL OF EXTERNAL STRUCTURES CONSTRUCTION
- CLASSE 2.1.17. MATERIAL OF EXTERNAL UTILITIES CONSTRUCTION
- CLASSE 2.1.18. MATERIAL OF EXTERNAL SECURITY CONSTRUCTION
- CLASSE 2.1.19. MATERIAL OF EXTERNAL LANDSCAPING CONSTRUCTION
- CLASSE 2.1.20. MATERIAL OF EXTERNAL LIGHTING CONSTRUCTION
- CLASSE 2.1.21. MATERIAL OF EXTERNAL SOUNDING CONSTRUCTION
- CLASSE 2.1.22. MATERIAL OF EXTERNAL VENTILATION CONSTRUCTION
- CLASSE 2.1.23. MATERIAL OF EXTERNAL FIRE PROTECTION CONSTRUCTION
- CLASSE 2.1.24. MATERIAL OF EXTERNAL ACCESSIBILITY CONSTRUCTION
- CLASSE 2.1.25. MATERIAL OF EXTERNAL SUSTAINABILITY CONSTRUCTION
- CLASSE 2.1.26. MATERIAL OF EXTERNAL SMART TECHNOLOGY CONSTRUCTION
- CLASSE 2.1.27. MATERIAL OF EXTERNAL ENERGY EFFICIENCY CONSTRUCTION
- CLASSE 2.1.28. MATERIAL OF EXTERNAL WATER EFFICIENCY CONSTRUCTION
- CLASSE 2.1.29. MATERIAL OF EXTERNAL AIR QUALITY CONSTRUCTION
- CLASSE 2.1.30. MATERIAL OF EXTERNAL LIGHT POLLUTION CONSTRUCTION
- CLASSE 2.1.31. MATERIAL OF EXTERNAL GLARE CONSTRUCTION
- CLASSE 2.1.32. MATERIAL OF EXTERNAL HEAT ISLANDING CONSTRUCTION
- CLASSE 2.1.33. MATERIAL OF EXTERNAL SOIL POLLUTION CONSTRUCTION
- CLASSE 2.1.34. MATERIAL OF EXTERNAL NOISE POLLUTION CONSTRUCTION
- CLASSE 2.1.35. MATERIAL OF EXTERNAL AIR POLLUTION CONSTRUCTION
- CLASSE 2.1.36. MATERIAL OF EXTERNAL WATER POLLUTION CONSTRUCTION
- CLASSE 2.1.37. MATERIAL OF EXTERNAL WASTE POLLUTION CONSTRUCTION
- CLASSE 2.1.38. MATERIAL OF EXTERNAL BIODIVERSITY CONSTRUCTION
- CLASSE 2.1.39. MATERIAL OF EXTERNAL CULTURAL HERITAGE CONSTRUCTION
- CLASSE 2.1.40. MATERIAL OF EXTERNAL SOCIAL EQUITY CONSTRUCTION
- CLASSE 2.1.41. MATERIAL OF EXTERNAL COMMUNITY ENGAGEMENT CONSTRUCTION
- CLASSE 2.1.42. MATERIAL OF EXTERNAL TRANSPARENCY CONSTRUCTION
- CLASSE 2.1.43. MATERIAL OF EXTERNAL ACCOUNTABILITY CONSTRUCTION
- CLASSE 2.1.44. MATERIAL OF EXTERNAL ETHICAL CONSTRUCTION
- CLASSE 2.1.45. MATERIAL OF EXTERNAL INTEGRITY CONSTRUCTION
- CLASSE 2.1.46. MATERIAL OF EXTERNAL RESILIENCE CONSTRUCTION
- CLASSE 2.1.47. MATERIAL OF EXTERNAL ADAPTABILITY CONSTRUCTION
- CLASSE 2.1.48. MATERIAL OF EXTERNAL FLEXIBILITY CONSTRUCTION
- CLASSE 2.1.49. MATERIAL OF EXTERNAL INNOVATION CONSTRUCTION
- CLASSE 2.1.50. MATERIAL OF EXTERNAL LEADERSHIP CONSTRUCTION
- CLASSE 2.1.51. MATERIAL OF EXTERNAL COLLABORATION CONSTRUCTION
- CLASSE 2.1.52. MATERIAL OF EXTERNAL PARTNERSHIP CONSTRUCTION
- CLASSE 2.1.53. MATERIAL OF EXTERNAL NETWORKING CONSTRUCTION
- CLASSE 2.1.54. MATERIAL OF EXTERNAL ALLIANCE CONSTRUCTION
- CLASSE 2.1.55. MATERIAL OF EXTERNAL COOPERATION CONSTRUCTION
- CLASSE 2.1.56. MATERIAL OF EXTERNAL ASSISTANCE CONSTRUCTION
- CLASSE 2.1.57. MATERIAL OF EXTERNAL SUPPORT CONSTRUCTION
- CLASSE 2.1.58. MATERIAL OF EXTERNAL PROMOTION CONSTRUCTION
- CLASSE 2.1.59. MATERIAL OF EXTERNAL AWARENESS CONSTRUCTION
- CLASSE 2.1.60. MATERIAL OF EXTERNAL EDUCATION CONSTRUCTION
- CLASSE 2.1.61. MATERIAL OF EXTERNAL TRAINING CONSTRUCTION
- CLASSE 2.1.62. MATERIAL OF EXTERNAL DEVELOPMENT CONSTRUCTION
- CLASSE 2.1.63. MATERIAL OF EXTERNAL GROWTH CONSTRUCTION
- CLASSE 2.1.64. MATERIAL OF EXTERNAL PROGRESS CONSTRUCTION
- CLASSE 2.1.65. MATERIAL OF EXTERNAL IMPROVEMENT CONSTRUCTION
- CLASSE 2.1.66. MATERIAL OF EXTERNAL BENEFIT CONSTRUCTION
- CLASSE 2.1.67. MATERIAL OF EXTERNAL VALUE CONSTRUCTION
- CLASSE 2.1.68. MATERIAL OF EXTERNAL QUALITY CONSTRUCTION
- CLASSE 2.1.69. MATERIAL OF EXTERNAL EXCELLENCE CONSTRUCTION
- CLASSE 2.1.70. MATERIAL OF EXTERNAL PERFECTION CONSTRUCTION
- CLASSE 2.1.71. MATERIAL OF EXTERNAL HARMONY CONSTRUCTION
- CLASSE 2.1.72. MATERIAL OF EXTERNAL BALANCE CONSTRUCTION
- CLASSE 2.1.73. MATERIAL OF EXTERNAL EQUITY CONSTRUCTION
- CLASSE 2.1.74. MATERIAL OF EXTERNAL JUSTICE CONSTRUCTION
- CLASSE 2.1.75. MATERIAL OF EXTERNAL FAIRNESS CONSTRUCTION
- CLASSE 2.1.76. MATERIAL OF EXTERNAL INTEGRITY CONSTRUCTION
- CLASSE 2.1.77. MATERIAL OF EXTERNAL HONESTY CONSTRUCTION
- CLASSE 2.1.78. MATERIAL OF EXTERNAL SINCERITY CONSTRUCTION
- CLASSE 2.1.79. MATERIAL OF EXTERNAL GENUINENESS CONSTRUCTION
- CLASSE 2.1.80. MATERIAL OF EXTERNAL AUTHENTICITY CONSTRUCTION
- CLASSE 2.1.81. MATERIAL OF EXTERNAL ORIGINALITY CONSTRUCTION
- CLASSE 2.1.82. MATERIAL OF EXTERNAL CREATIVITY CONSTRUCTION
- CLASSE 2.1.83. MATERIAL OF EXTERNAL INNOVATION CONSTRUCTION
- CLASSE 2.1.84. MATERIAL OF EXTERNAL IDEAS CONSTRUCTION
- CLASSE 2.1.85. MATERIAL OF EXTERNAL IMAGINATION CONSTRUCTION
- CLASSE 2.1.86. MATERIAL OF EXTERNAL VISION CONSTRUCTION
- CLASSE 2.1.87. MATERIAL OF EXTERNAL DREAMS CONSTRUCTION
- CLASSE 2.1.88. MATERIAL OF EXTERNAL HOPE CONSTRUCTION
- CLASSE 2.1.89. MATERIAL OF EXTERNAL FAITH CONSTRUCTION
- CLASSE 2.1.90. MATERIAL OF EXTERNAL BELIEF CONSTRUCTION
- CLASSE 2.1.91. MATERIAL OF EXTERNAL TRUST CONSTRUCTION
- CLASSE 2.1.92. MATERIAL OF EXTERNAL CONFIDENCE CONSTRUCTION
- CLASSE 2.1.93. MATERIAL OF EXTERNAL ASSURANCE CONSTRUCTION
- CLASSE 2.1.94. MATERIAL OF EXTERNAL SECURITY CONSTRUCTION
- CLASSE 2.1.95. MATERIAL OF EXTERNAL PROTECTION CONSTRUCTION
- CLASSE 2.1.96. MATERIAL OF EXTERNAL DEFENCE CONSTRUCTION
- CLASSE 2.1.97. MATERIAL OF EXTERNAL SHIELDING CONSTRUCTION
- CLASSE 2.1.98. MATERIAL OF EXTERNAL COVERING CONSTRUCTION
- CLASSE 2.1.99. MATERIAL OF EXTERNAL HIDEAWAY CONSTRUCTION
- CLASSE 2.1.100. MATERIAL OF EXTERNAL CONCEALMENT CONSTRUCTION

ARCHITECT:
FIELDWORK
MH Design Layer Pty Ltd
Suite 101/107-111
Springvale VIC 3012
T: +61 (0)3 9881 2401
info@fieldwork.com.au
www.fieldwork.com.au

MHNDUNION

DATE:
A 10/12/21
B 24/02/22
C 20/02/22
D 27/10/22
E 19/10/22
F 19/10/22

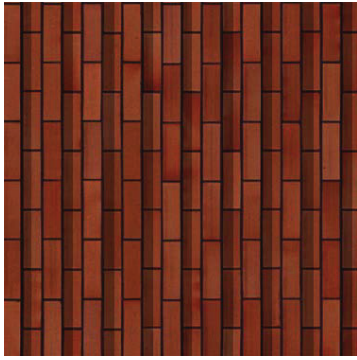
DISCUSSION:
A DEVELOPER APPLICATION
B COUNCIL RESPONSES
C COUNCIL RESPONSES
D COUNCIL RESPONSES
E COUNCIL RESPONSES
F COUNCIL RESPONSES



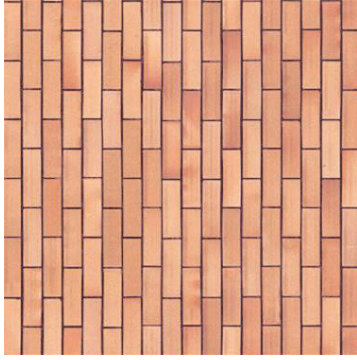
BR01 -
 BRICK -
 MANUFACTURER: KRALBE BRICKS
 COMPOSITION: STRETCHER BOND
 FINISH: RED



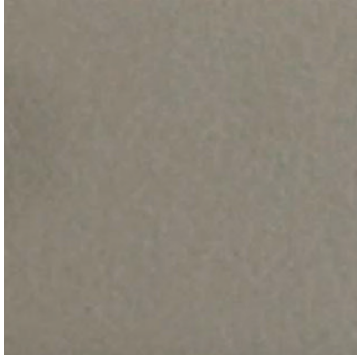
BR02 -
 BRICK -
 MANUFACTURER: KRALBE BRICKS
 COMPOSITION: SOLDIER BOND
 FINISH: RED



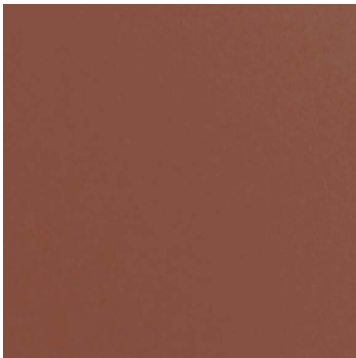
BR03 -
 BRICK -
 MANUFACTURER: KRALBE BRICKS
 COMPOSITION: STRETCHER BOND, EMPTY SECOND COURSE RECESSED
 FINISH: RED



BR04 -
 BRICK -
 MANUFACTURER: KRALBE BRICKS
 COMPOSITION: STRETCHER BOND
 COLOUR: CUSTOM



PO01 -
 POWDERCOAT -
 MANUFACTURER: INTERION
 COLOUR: ANODIC BURNED GREY
 FINISH: MAT



PO02 -
 POWDERCOAT -
 MANUFACTURER: INTERION
 COLOUR: ANODIC BURNED GREY
 FINISH: MAT



CO01 -
 PRECAST CONCRETE -
 MANUFACTURER: AEROLUX
 COLOUR: POLYMER COATED (TOP) WHITE CEMENT (COLOR)
 FINISH: NATURAL



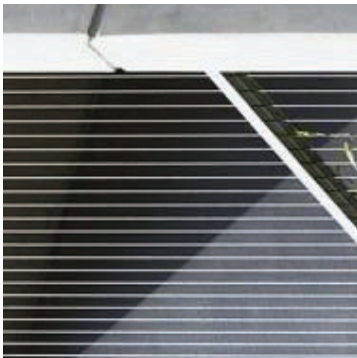
CO02 -
 PRECAST CONCRETE -
 MANUFACTURER: AEROLUX
 COLOUR: NATURAL
 FINISH: NATURAL (CONCRETE CLASS AS NECESSARY)



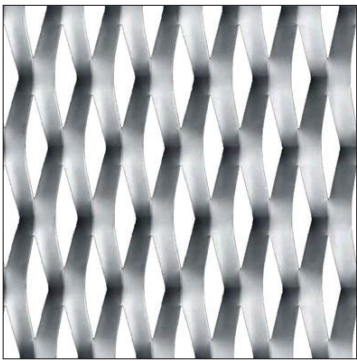
GL01 -
 GLASS -
 MANUFACTURER: VINDINI
 COLOUR: CLEAR
 FINISH: NATURAL



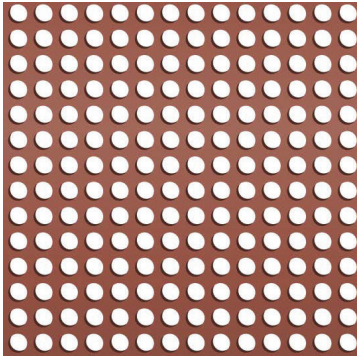
GL02 -
 GLASS -
 MANUFACTURER: AVALON GLASS
 COLOUR: CLEAR
 FINISH: NARROW RIBBED (CIRCULAR)



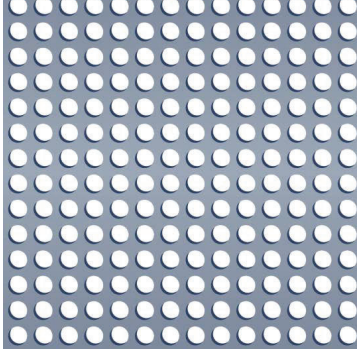
ME01 -
 METAL MESH
 MANUFACTURER: LOCKER GROUP
 COLOUR: NATURAL METAL - TO MATCH HC01
 FINISH: POLISHED, 20% OPEN PERMEABILITY



ME02 -
 PERFORATED METAL MESH
 MANUFACTURER: LOCKER GROUP
 COLOUR: POLYMER COATED TO MATCH FC02
 FINISH: POLISHED, 20% OPEN PERMEABILITY



ME03 -
 PERFORATED METAL MESH
 MANUFACTURER: LOCKER GROUP
 COLOUR: POLYMER COATED TO MATCH FC02
 FINISH: POLISHED, 20% OPEN PERMEABILITY



ME04 -
 PERFORATED METAL MESH
 MANUFACTURER: LOCKER GROUP
 COLOUR: POLYMER COATED TO MATCH FC01
 FINISH: POLISHED, 20% OPEN PERMEABILITY

REV	DESCRIPTION	DATE	ARCHITECT
A	DISCUSSION	10/1/21	FIELDWORK
B	DEVELOPMENT APPLICATION	24/02/22	FIELDWORK
C	COUNCIL RESPONSES	20/10/22	FIELDWORK
D	COUNCIL RESPONSES	27/10/22	FIELDWORK
E	COUNCIL RESPONSES		FIELDWORK

FIELDWORK
 ARCHITECT
 MFL Design Urban Pty Ltd
 Suite 101/107-110/110
 500 Pitt Street West
 Sydney NSW 2000
 T: +61 (0)2 9201 2607
 E: info@fieldwork.com.au
 © FIELDWORK ARCHITECTS

MHNDU NION
 MANUFACTURER
 MFL Design Urban Pty Ltd
 Suite 101/107-110/110
 500 Pitt Street West
 Sydney NSW 2000
 T: +61 (0)2 9201 2607
 E: info@fieldwork.com.au
 © FIELDWORK ARCHITECTS

ADDITIONAL INFORMATION TO CHECK APPROVED DOCUMENTS
 CLASS 1 - ALL MATERIALS TO BE SUBMITTED FOR APPROVAL
 CLASS 2 - ALL MATERIALS TO BE SUBMITTED FOR APPROVAL
 CLASS 3 - ALL MATERIALS TO BE SUBMITTED FOR APPROVAL
 CLASS 4 - ALL MATERIALS TO BE SUBMITTED FOR APPROVAL
 CLASS 5 - ALL MATERIALS TO BE SUBMITTED FOR APPROVAL
 CLASS 6 - ALL MATERIALS TO BE SUBMITTED FOR APPROVAL
 CLASS 7 - ALL MATERIALS TO BE SUBMITTED FOR APPROVAL
 CLASS 8 - ALL MATERIALS TO BE SUBMITTED FOR APPROVAL
 CLASS 9 - ALL MATERIALS TO BE SUBMITTED FOR APPROVAL
 CLASS 10 - ALL MATERIALS TO BE SUBMITTED FOR APPROVAL

NOTES:
 1. EXISTING FINISHES TO BE MAINTAINED WHERE POSSIBLE.
 2. ALL MATERIALS TO BE SUBMITTED FOR APPROVAL.
 3. ALL MATERIALS TO BE SUBMITTED FOR APPROVAL.
 4. ALL MATERIALS TO BE SUBMITTED FOR APPROVAL.
 5. ALL MATERIALS TO BE SUBMITTED FOR APPROVAL.
 6. ALL MATERIALS TO BE SUBMITTED FOR APPROVAL.
 7. ALL MATERIALS TO BE SUBMITTED FOR APPROVAL.
 8. ALL MATERIALS TO BE SUBMITTED FOR APPROVAL.
 9. ALL MATERIALS TO BE SUBMITTED FOR APPROVAL.
 10. ALL MATERIALS TO BE SUBMITTED FOR APPROVAL.

DRAWING TITLE:
EXTERNAL FINISHES
PROJECT ADDRESS:
903-921 BOURKE STREET, WATERLOO NSW 2017

CHECKED BY: FVAMHINDU
DRAWN BY: FVAMHINDU
SCALE: NTS
ISSUE DATE: 27/10/22
PROJECT NO: 19-030
REVISION: DWG NUMBER: D2.BS.NS.90.01
 REVISION: E



REV	DISCUSSION	DATE	ARCHITECT:
A	DATE PLAN APPLICATION	10/11/21	FIELDWORK MHNDU Design Layer Pty Ltd 389 Pitt Street Sydney NSW 2000 T: +61 (0)2 9210 1111 www.fieldwork.com.au 87 FIELDWORK PLACE SYDNEY NSW 2000
B	COUNCIL RESPONSES	24/03/22	
C	REVISED APPLICATION	20/10/22	
D	COUNCIL RESPONSES	27/10/22	
E	COUNCIL RESPONSES		

ARCHITECT:
FIELDWORK
 MHNDU Design Layer Pty Ltd
 389 Pitt Street
 Sydney NSW 2000
 T: +61 (0)2 9210 1111
 www.fieldwork.com.au
 87 FIELDWORK PLACE
 SYDNEY NSW 2000

MHNDU N I O N
 MHNDU Design Layer Pty Ltd
 389 Pitt Street
 Sydney NSW 2000
 T: +61 (0)2 9210 1111
 www.mhndu.com.au
 87 MHNDU PLACE
 SYDNEY NSW 2000

ADMINISTRATIVE TO COMPLY WITH REGULATIONS
 CHANGE 1: ALL MATERIALS TO BE SUBMITTED FOR APPROVAL
 CHANGE 2: ALL MATERIALS TO BE SUBMITTED FOR APPROVAL
 CHANGE 3: ALL MATERIALS TO BE SUBMITTED FOR APPROVAL
 CHANGE 4: ALL MATERIALS TO BE SUBMITTED FOR APPROVAL
 CHANGE 5: ALL MATERIALS TO BE SUBMITTED FOR APPROVAL
 CHANGE 6: ALL MATERIALS TO BE SUBMITTED FOR APPROVAL
 CHANGE 7: ALL MATERIALS TO BE SUBMITTED FOR APPROVAL
 CHANGE 8: ALL MATERIALS TO BE SUBMITTED FOR APPROVAL
 CHANGE 9: ALL MATERIALS TO BE SUBMITTED FOR APPROVAL
 CHANGE 10: ALL MATERIALS TO BE SUBMITTED FOR APPROVAL

COMMENTS TO CLIENT
 CHANGE 1: ALL MATERIALS TO BE SUBMITTED FOR APPROVAL
 CHANGE 2: ALL MATERIALS TO BE SUBMITTED FOR APPROVAL
 CHANGE 3: ALL MATERIALS TO BE SUBMITTED FOR APPROVAL
 CHANGE 4: ALL MATERIALS TO BE SUBMITTED FOR APPROVAL
 CHANGE 5: ALL MATERIALS TO BE SUBMITTED FOR APPROVAL
 CHANGE 6: ALL MATERIALS TO BE SUBMITTED FOR APPROVAL
 CHANGE 7: ALL MATERIALS TO BE SUBMITTED FOR APPROVAL
 CHANGE 8: ALL MATERIALS TO BE SUBMITTED FOR APPROVAL
 CHANGE 9: ALL MATERIALS TO BE SUBMITTED FOR APPROVAL
 CHANGE 10: ALL MATERIALS TO BE SUBMITTED FOR APPROVAL

NOTES:
 1. ALL MATERIALS TO BE SUBMITTED FOR APPROVAL
 2. ALL MATERIALS TO BE SUBMITTED FOR APPROVAL
 3. ALL MATERIALS TO BE SUBMITTED FOR APPROVAL
 4. ALL MATERIALS TO BE SUBMITTED FOR APPROVAL
 5. ALL MATERIALS TO BE SUBMITTED FOR APPROVAL
 6. ALL MATERIALS TO BE SUBMITTED FOR APPROVAL
 7. ALL MATERIALS TO BE SUBMITTED FOR APPROVAL
 8. ALL MATERIALS TO BE SUBMITTED FOR APPROVAL
 9. ALL MATERIALS TO BE SUBMITTED FOR APPROVAL
 10. ALL MATERIALS TO BE SUBMITTED FOR APPROVAL

DRAWING TITLE:
VIEW 01 BOURKE STREET
PROJECT ADDRESS:
**903-921 BOURKE STREET,
 WATERLOO NSW 2017**

SCALE:
 NTS
ISSUE DATE:
 27/10/22
PROJECT NO:
 19-030
REVISION:
 DWG NUMBER:
 D2.BSN-S.92.01
 CHECKED BY:
 FWA/MHNDU
 DRAWN BY:
 FWA/MHNDU
 PROJECT NO:
 19-030
 REVISION:
 DWG NUMBER:
 D2.BSN-S.92.01



REV	DISCREPANCY	DATE	ARCHITECT:
A	DEVELOPER APPLICATION	10/1/11	FIELDWORK MHNDU Design Layer Pty Ltd Level 2, 100 Bridge Street Sydney NSW 2010 T +61 (0)2 9601 2801 fieldwork@fieldwork.com.au © FIELDWORK PROJECTS
B	COUNCIL REF RESPONSES	2/10/12	
C	COUNCIL REF RESPONSES	2/10/12	
E	COUNCIL REF RESPONSES	27/10/22	

ARCHITECT:
FIELDWORK
MHNDU Design Layer Pty Ltd
Level 2, 100 Bridge Street
Sydney NSW 2010
T +61 (0)2 9601 2801
fieldwork@fieldwork.com.au
© FIELDWORK PROJECTS

MHNDUNION
MHNDU Design Layer Pty Ltd
Level 2, 100 Bridge Street
Sydney NSW 2010
T +61 (0)2 9601 2801
mhndu@mhndu.com.au
© MHNDU DESIGN LAYER 2022

APPROVING TO CITY OF PERTH DEVELOPER DISBURSE
 CHANGE 1: ALL MATERIALS & FINISHES TO BE SUBMITTED FOR APPROVAL TO CITY OF PERTH
 CHANGE 2: ALL MATERIALS & FINISHES TO BE SUBMITTED FOR APPROVAL TO CITY OF PERTH
 CHANGE 3: ALL MATERIALS & FINISHES TO BE SUBMITTED FOR APPROVAL TO CITY OF PERTH
 CHANGE 4: ALL MATERIALS & FINISHES TO BE SUBMITTED FOR APPROVAL TO CITY OF PERTH
 CHANGE 5: ALL MATERIALS & FINISHES TO BE SUBMITTED FOR APPROVAL TO CITY OF PERTH
 CHANGE 6: ALL MATERIALS & FINISHES TO BE SUBMITTED FOR APPROVAL TO CITY OF PERTH
 CHANGE 7: ALL MATERIALS & FINISHES TO BE SUBMITTED FOR APPROVAL TO CITY OF PERTH
 CHANGE 8: ALL MATERIALS & FINISHES TO BE SUBMITTED FOR APPROVAL TO CITY OF PERTH
 CHANGE 9: ALL MATERIALS & FINISHES TO BE SUBMITTED FOR APPROVAL TO CITY OF PERTH
 CHANGE 10: ALL MATERIALS & FINISHES TO BE SUBMITTED FOR APPROVAL TO CITY OF PERTH

NOTES:
 ALL MATERIALS TO BE SUBMITTED FOR APPROVAL TO CITY OF PERTH
 ALL MATERIALS TO BE SUBMITTED FOR APPROVAL TO CITY OF PERTH
 ALL MATERIALS TO BE SUBMITTED FOR APPROVAL TO CITY OF PERTH
 ALL MATERIALS TO BE SUBMITTED FOR APPROVAL TO CITY OF PERTH
 ALL MATERIALS TO BE SUBMITTED FOR APPROVAL TO CITY OF PERTH
 ALL MATERIALS TO BE SUBMITTED FOR APPROVAL TO CITY OF PERTH
 ALL MATERIALS TO BE SUBMITTED FOR APPROVAL TO CITY OF PERTH
 ALL MATERIALS TO BE SUBMITTED FOR APPROVAL TO CITY OF PERTH
 ALL MATERIALS TO BE SUBMITTED FOR APPROVAL TO CITY OF PERTH
 ALL MATERIALS TO BE SUBMITTED FOR APPROVAL TO CITY OF PERTH
 ALL MATERIALS TO BE SUBMITTED FOR APPROVAL TO CITY OF PERTH
 ALL MATERIALS TO BE SUBMITTED FOR APPROVAL TO CITY OF PERTH

DRAWING TITLE:
VIEW 02 CENTRAL PARK

PROJECT ADDRESS:
**903-921 BOURKE STREET,
WATERLOO NSW 2017**

DWG NUMBER:
D2.BS.NS.92.02

CHECKED BY:
FVAMHNDU

PROJECT NO:
19-030

REVISION:
E

DRAWN BY:
FVAMHNDU

SCALE:
NTS

ISSUE DATE:
27/10/22

DWG NUMBER:
D2.BS.NS.92.02

FIELDWORK PROJECTS
LEVEL 2, 100 BRIDGE STREET, SYDNEY NSW 2010
T +61 (0)2 9601 2801
fieldwork@fieldwork.com.au
© FIELDWORK PROJECTS



<p>REV</p> <p>A</p> <p>B</p> <p>C</p> <p>D</p> <p>E</p>	<p>DISCUSSION</p> <p>DATE</p> <p>20/12/21</p> <p>20/12/22</p> <p>20/12/22</p> <p>27/10/22</p>	<p>ARCHITECT</p> <p>FIELDWORK</p> <p>MH Design Layer Pty Ltd</p> <p>300 Pitt Street NSW 2000</p> <p>T: +61 (0)2 9011 1111</p> <p>fieldwork.com.au</p>	<p>ARCHITECT</p> <p>MHNDU NION</p> <p>MH Design Layer Pty Ltd</p> <p>300 Pitt Street NSW 2000</p> <p>T: +61 (0)2 9011 1111</p> <p>mhndunion.com.au</p>	<p>NOTES:</p> <p>EXISTING GRADE</p> <p>FLOOR LEVEL</p> <p>FIN</p> <p>TO BE</p> <p>DEVELOPER TO BE</p> <p>CONTRACTS</p> <p>VEGETATION PLANTING</p>	<p>ADDITIONAL NOTES TO COMPANY AFFIRMATION DISCLOSURE 4</p> <p>CLAIMS TO A MATERIAL PUBLIC CONTRIBUTION</p> <p>CLAIMS TO A MATERIAL PUBLIC CONTRIBUTION</p> <p>CLAIMS TO A MATERIAL PUBLIC CONTRIBUTION</p> <p>CLAIMS TO A MATERIAL PUBLIC CONTRIBUTION</p> <p>CLAIMS TO A MATERIAL PUBLIC CONTRIBUTION</p> <p>CLAIMS TO A MATERIAL PUBLIC CONTRIBUTION</p> <p>CLAIMS TO A MATERIAL PUBLIC CONTRIBUTION</p> <p>CLAIMS TO A MATERIAL PUBLIC CONTRIBUTION</p> <p>CLAIMS TO A MATERIAL PUBLIC CONTRIBUTION</p> <p>CLAIMS TO A MATERIAL PUBLIC CONTRIBUTION</p> <p>CLAIMS TO A MATERIAL PUBLIC CONTRIBUTION</p>	<p>ADDITIONAL NOTES TO COMPANY AFFIRMATION DISCLOSURE 4</p> <p>CLAIMS TO A MATERIAL PUBLIC CONTRIBUTION</p> <p>CLAIMS TO A MATERIAL PUBLIC CONTRIBUTION</p> <p>CLAIMS TO A MATERIAL PUBLIC CONTRIBUTION</p> <p>CLAIMS TO A MATERIAL PUBLIC CONTRIBUTION</p> <p>CLAIMS TO A MATERIAL PUBLIC CONTRIBUTION</p> <p>CLAIMS TO A MATERIAL PUBLIC CONTRIBUTION</p> <p>CLAIMS TO A MATERIAL PUBLIC CONTRIBUTION</p> <p>CLAIMS TO A MATERIAL PUBLIC CONTRIBUTION</p> <p>CLAIMS TO A MATERIAL PUBLIC CONTRIBUTION</p> <p>CLAIMS TO A MATERIAL PUBLIC CONTRIBUTION</p>	<p>NOTES:</p> <p>EXISTING GRADE</p> <p>FLOOR LEVEL</p> <p>FIN</p> <p>TO BE</p> <p>DEVELOPER TO BE</p> <p>CONTRACTS</p> <p>VEGETATION PLANTING</p>
<p>SCALE:</p> <p>NTS</p> <p>ISSUE DATE:</p> <p>27/10/22</p>		<p>DRAWING TITLE:</p> <p>VIEW 03 LEVEL 1 OASIS</p> <p>PROJECT ADDRESS:</p> <p>903-921 BOURKE STREET, WATERLOO NSW 2017</p>		<p>CHECKED BY:</p> <p>FVA-MHNDU</p> <p>PROJECT NO:</p> <p>19-030</p> <p>REVISION:</p> <p>D2.BS.NS.92.03</p>		<p>FIELDWORK ARCHITECTS PTY LTD (ACN 629 441 111) (ABN 62 629 441 111) 300 PITT STREET NSW 2000</p> <p>MHNDU NION PTY LTD (ACN 629 441 111) (ABN 62 629 441 111) 300 PITT STREET NSW 2000</p> <p>VEGETATION CONSULTANTS PTY LTD (ACN 629 441 111) (ABN 62 629 441 111) 300 PITT STREET NSW 2000</p> <p>VEGETATION CONSULTANTS PTY LTD (ACN 629 441 111) (ABN 62 629 441 111) 300 PITT STREET NSW 2000</p> <p>VEGETATION CONSULTANTS PTY LTD (ACN 629 441 111) (ABN 62 629 441 111) 300 PITT STREET NSW 2000</p> <p>VEGETATION CONSULTANTS PTY LTD (ACN 629 441 111) (ABN 62 629 441 111) 300 PITT STREET NSW 2000</p> <p>VEGETATION CONSULTANTS PTY LTD (ACN 629 441 111) (ABN 62 629 441 111) 300 PITT STREET NSW 2000</p> <p>VEGETATION CONSULTANTS PTY LTD (ACN 629 441 111) (ABN 62 629 441 111) 300 PITT STREET NSW 2000</p> <p>VEGETATION CONSULTANTS PTY LTD (ACN 629 441 111) (ABN 62 629 441 111) 300 PITT STREET NSW 2000</p> <p>VEGETATION CONSULTANTS PTY LTD (ACN 629 441 111) (ABN 62 629 441 111) 300 PITT STREET NSW 2000</p> <p>VEGETATION CONSULTANTS PTY LTD (ACN 629 441 111) (ABN 62 629 441 111) 300 PITT STREET NSW 2000</p>	

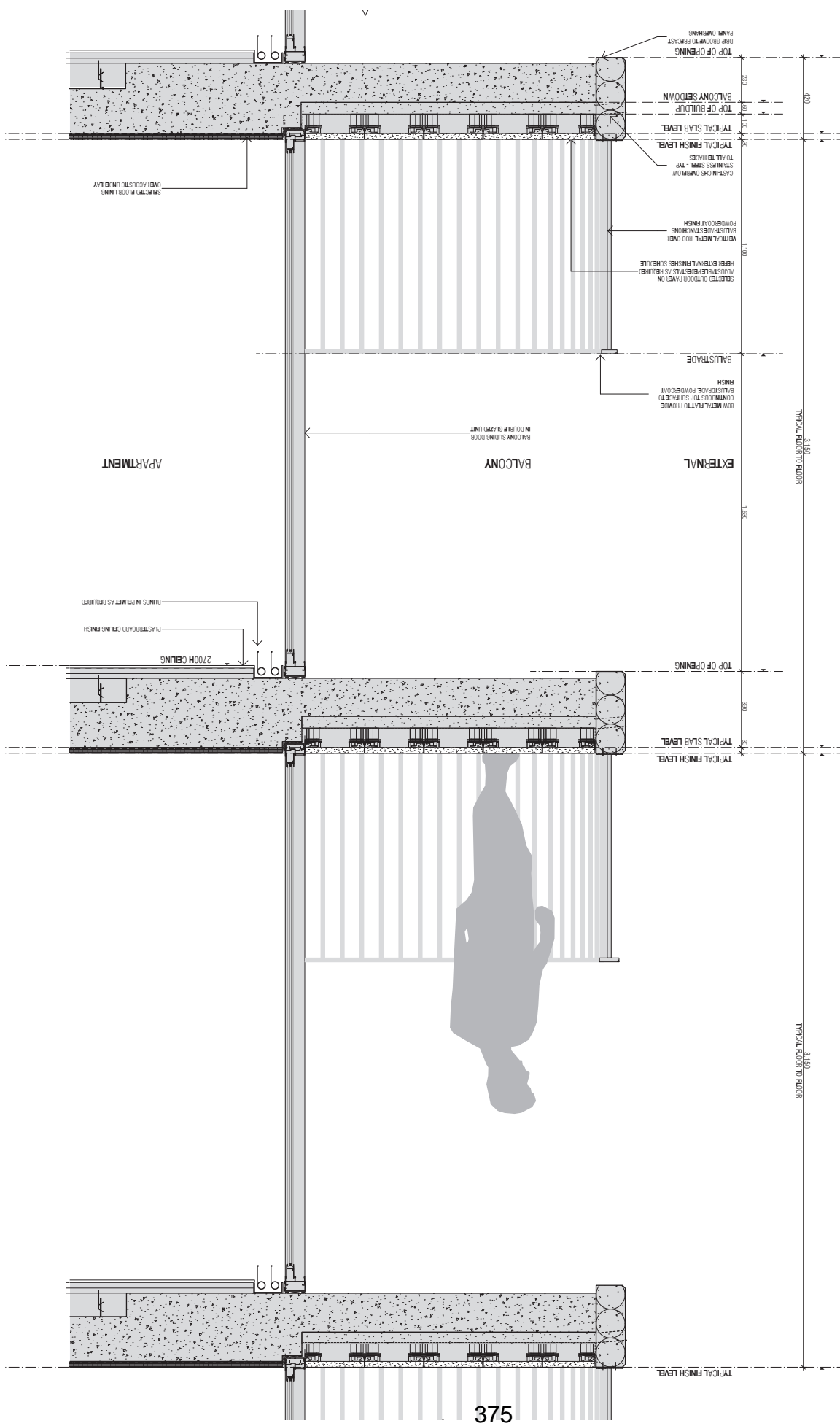


373

<p>REV</p> <p>DISCUSSION</p> <p>C COUNCIL RESPONSES</p> <p>D COUNCIL RESPONSES</p> <p>E COUNCIL RESPONSES</p>	<p>DATE</p> <p>14/12/21</p> <p>28/10/22</p> <p>27/10/22</p>	<p>ARCHITECT:</p> <p>FIELDWORK</p> <p>MH Design Layer Pty Ltd 10/11-13/15 Sturt Street Sydney NSW 2010 02 9550 8888 fieldwork.com.au</p> <p>Ben Myerson - 1800 496 4027 T 61 (02) 9101 1111 ben@fieldwork.com.au © 2022 Fieldwork Pty Ltd</p>	<p>AMENDMENTS TO COPY APPROVED DOCUMENTS</p> <p>CHANGE 1: MATERIALS FOR CONCRETEWORK</p> <p>CHANGE 2: MATERIALS FOR CONCRETEWORK</p> <p>CHANGE 3: MATERIALS FOR CONCRETEWORK</p> <p>CHANGE 4: MATERIALS FOR CONCRETEWORK</p> <p>CHANGE 5: MATERIALS FOR CONCRETEWORK</p> <p>CHANGE 6: MATERIALS FOR CONCRETEWORK</p> <p>CHANGE 7: MATERIALS FOR CONCRETEWORK</p> <p>CHANGE 8: MATERIALS FOR CONCRETEWORK</p> <p>CHANGE 9: MATERIALS FOR CONCRETEWORK</p> <p>CHANGE 10: MATERIALS FOR CONCRETEWORK</p> <p>CHANGE 11: MATERIALS FOR CONCRETEWORK</p> <p>CHANGE 12: MATERIALS FOR CONCRETEWORK</p> <p>CHANGE 13: MATERIALS FOR CONCRETEWORK</p> <p>CHANGE 14: MATERIALS FOR CONCRETEWORK</p> <p>CHANGE 15: MATERIALS FOR CONCRETEWORK</p> <p>CHANGE 16: MATERIALS FOR CONCRETEWORK</p> <p>CHANGE 17: MATERIALS FOR CONCRETEWORK</p> <p>CHANGE 18: MATERIALS FOR CONCRETEWORK</p> <p>CHANGE 19: MATERIALS FOR CONCRETEWORK</p> <p>CHANGE 20: MATERIALS FOR CONCRETEWORK</p>	<p>NOTES:</p> <p>1. ALL DIMENSIONS TO FACE UNLESS SPECIFIED OTHERWISE</p> <p>2. ALL DIMENSIONS TO FACE UNLESS SPECIFIED OTHERWISE</p> <p>3. ALL DIMENSIONS TO FACE UNLESS SPECIFIED OTHERWISE</p> <p>4. ALL DIMENSIONS TO FACE UNLESS SPECIFIED OTHERWISE</p> <p>5. ALL DIMENSIONS TO FACE UNLESS SPECIFIED OTHERWISE</p> <p>6. ALL DIMENSIONS TO FACE UNLESS SPECIFIED OTHERWISE</p> <p>7. ALL DIMENSIONS TO FACE UNLESS SPECIFIED OTHERWISE</p> <p>8. ALL DIMENSIONS TO FACE UNLESS SPECIFIED OTHERWISE</p> <p>9. ALL DIMENSIONS TO FACE UNLESS SPECIFIED OTHERWISE</p> <p>10. ALL DIMENSIONS TO FACE UNLESS SPECIFIED OTHERWISE</p> <p>11. ALL DIMENSIONS TO FACE UNLESS SPECIFIED OTHERWISE</p> <p>12. ALL DIMENSIONS TO FACE UNLESS SPECIFIED OTHERWISE</p> <p>13. ALL DIMENSIONS TO FACE UNLESS SPECIFIED OTHERWISE</p> <p>14. ALL DIMENSIONS TO FACE UNLESS SPECIFIED OTHERWISE</p> <p>15. ALL DIMENSIONS TO FACE UNLESS SPECIFIED OTHERWISE</p> <p>16. ALL DIMENSIONS TO FACE UNLESS SPECIFIED OTHERWISE</p> <p>17. ALL DIMENSIONS TO FACE UNLESS SPECIFIED OTHERWISE</p> <p>18. ALL DIMENSIONS TO FACE UNLESS SPECIFIED OTHERWISE</p> <p>19. ALL DIMENSIONS TO FACE UNLESS SPECIFIED OTHERWISE</p> <p>20. ALL DIMENSIONS TO FACE UNLESS SPECIFIED OTHERWISE</p>	<p>DRAWING TITLE:</p> <p>VIEW 07 NORTHERN LOBBY ENTRY</p> <p>PROJECT ADDRESS:</p> <p>903-921 BOURKE STREET, WATERLOO NSW 2017</p> <p>SCALE:</p> <p>NTS</p> <p>ISSUE DATE:</p> <p>27/10/22</p> <p>DWG NUMBER:</p> <p>D2.BS.N.S.92.07</p> <p>PROJECT NO:</p> <p>19-030</p> <p>REVISION:</p> <p>E</p> <p>CHECKED BY:</p> <p>DRAWN BY:</p> <p>PROJECT NO:</p> <p>19-030</p> <p>REVISION:</p> <p>E</p> <p>DWG NUMBER:</p> <p>D2.BS.N.S.92.07</p> <p>FIELDWORK ARCHITECTS PTY LTD 10/11-13/15 STURT STREET SYDNEY NSW 2010 02 9550 8888 fieldwork.com.au</p>
---	--	--	--	---	---

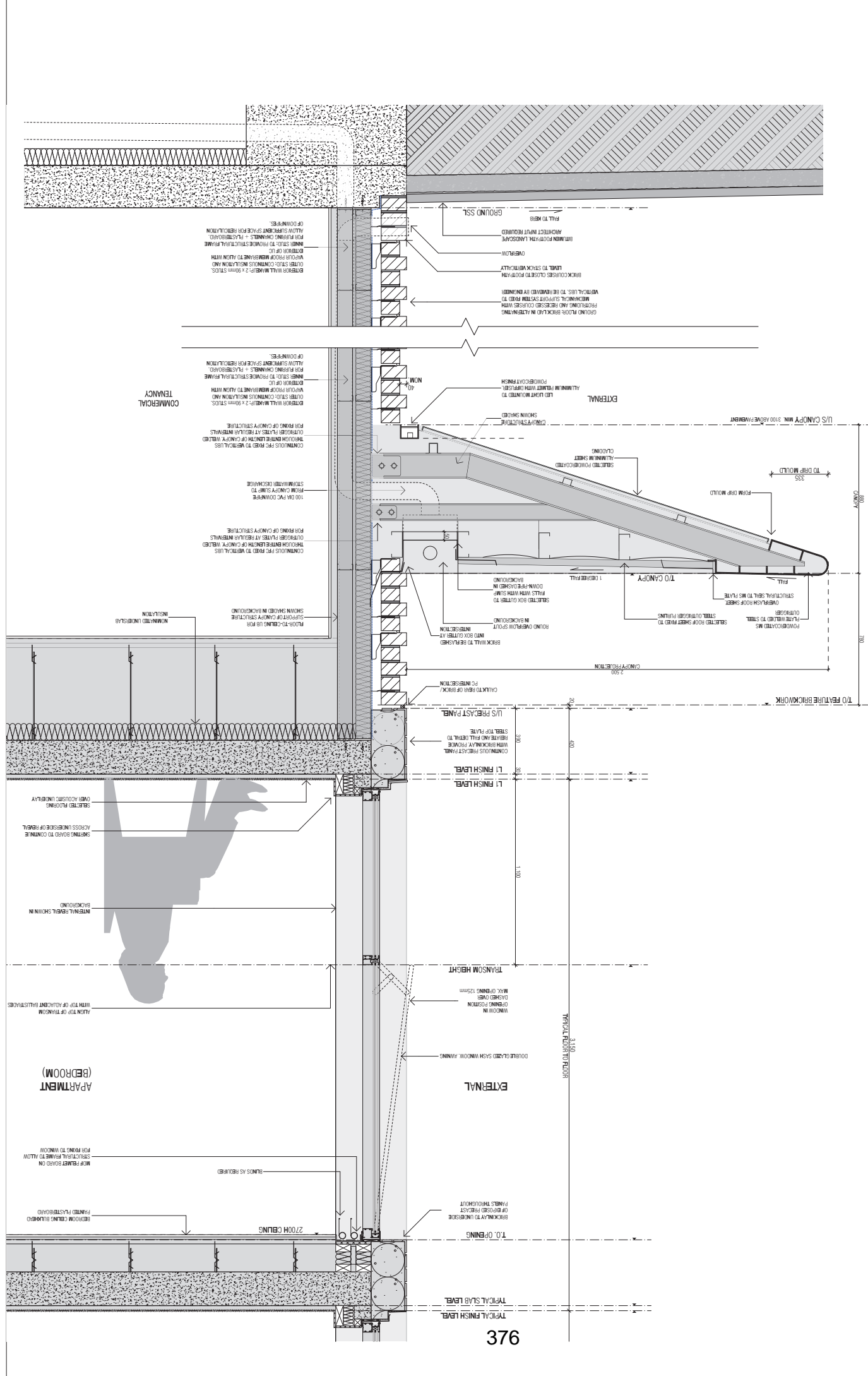


<p>REV</p> <p>DISCUSSION</p> <p>C COUNCIL RESPONSES</p> <p>D COUNCIL RESPONSES</p>	<p>DATE</p> <p>14/10/22</p> <p>27/10/22</p>	<p>ARCHITECT:</p> <p>FIELDWORK</p> <p>Fieldwork Pty Ltd 10/100 Springvale Rd Springvale VIC 3012 T +61 (0)3 9881 2801 fieldwork.com.au</p>	<p>ARCHITECT:</p> <p>MHNDUNION</p> <p>MHNDUNION Pty Ltd 10/100 Springvale Rd Springvale VIC 3012 T +61 (0)3 9881 2801 mhndunion.com.au</p>	<p>NOTES:</p> <p>1. ALL DIMENSIONS TO FACE UNLESS SPECIFIED OTHERWISE.</p> <p>2. ALL DIMENSIONS TO FACE UNLESS SPECIFIED OTHERWISE.</p> <p>3. ALL DIMENSIONS TO FACE UNLESS SPECIFIED OTHERWISE.</p> <p>4. ALL DIMENSIONS TO FACE UNLESS SPECIFIED OTHERWISE.</p> <p>5. ALL DIMENSIONS TO FACE UNLESS SPECIFIED OTHERWISE.</p> <p>6. ALL DIMENSIONS TO FACE UNLESS SPECIFIED OTHERWISE.</p> <p>7. ALL DIMENSIONS TO FACE UNLESS SPECIFIED OTHERWISE.</p> <p>8. ALL DIMENSIONS TO FACE UNLESS SPECIFIED OTHERWISE.</p> <p>9. ALL DIMENSIONS TO FACE UNLESS SPECIFIED OTHERWISE.</p> <p>10. ALL DIMENSIONS TO FACE UNLESS SPECIFIED OTHERWISE.</p>	<p>DRAWING TITLE:</p> <p>VIEW 08 NORTHERN LOBBY ENTRY</p> <p>PROJECT ADDRESS:</p> <p>903-921 BOURKE STREET, WATERLOO NSW 2017</p>	<p>SCALE:</p> <p>NTS</p> <p>ISSUE DATE:</p> <p>27/10/22</p> <p>DWG NUMBER:</p> <p>D2.BSNS.92.08</p> <p>REVISION:</p> <p>E</p> <p>CHECKED BY:</p> <p>PROJECT NO:</p> <p>19-030</p> <p>REVISION:</p> <p>E</p>
--	--	--	--	---	---	---



REV DISCREPANCY COUNCIL RESPONSES COUNCIL REVISIONS COUNCIL REVISIONS	DATE 20/10/22 21/10/22 27/10/22	ARCHITECT: FIELDWORK MHD Design Urban Pty Ltd 10/100 Pitt Street Sydney NSW 2000 T: +61 (0)2 9001 2807 fieldwork@fieldwork.com.au © Fieldwork Pty Ltd	NOTES: 1. ALL DIMENSIONS UNLESS OTHERWISE SPECIFIED ARE IN METERS. 2. ALL DIMENSIONS UNLESS OTHERWISE SPECIFIED ARE TO FACE UNLESS NOTED OTHERWISE. 3. ALL DIMENSIONS UNLESS OTHERWISE SPECIFIED ARE TO FACE UNLESS NOTED OTHERWISE. 4. ALL DIMENSIONS UNLESS OTHERWISE SPECIFIED ARE TO FACE UNLESS NOTED OTHERWISE. 5. ALL DIMENSIONS UNLESS OTHERWISE SPECIFIED ARE TO FACE UNLESS NOTED OTHERWISE. 6. ALL DIMENSIONS UNLESS OTHERWISE SPECIFIED ARE TO FACE UNLESS NOTED OTHERWISE. 7. ALL DIMENSIONS UNLESS OTHERWISE SPECIFIED ARE TO FACE UNLESS NOTED OTHERWISE. 8. ALL DIMENSIONS UNLESS OTHERWISE SPECIFIED ARE TO FACE UNLESS NOTED OTHERWISE. 9. ALL DIMENSIONS UNLESS OTHERWISE SPECIFIED ARE TO FACE UNLESS NOTED OTHERWISE. 10. ALL DIMENSIONS UNLESS OTHERWISE SPECIFIED ARE TO FACE UNLESS NOTED OTHERWISE.	ARCHITECT: FIELDWORK MHD Design Urban Pty Ltd 10/100 Pitt Street Sydney NSW 2000 T: +61 (0)2 9001 2807 fieldwork@fieldwork.com.au © Fieldwork Pty Ltd	ARCHITECT: MHNDU NION MHD Design Urban Pty Ltd 10/100 Pitt Street Sydney NSW 2000 T: +61 (0)2 9001 2807 mhndu@mhndu.com.au © MHNDU Design Urban Pty Ltd	DRAWING TITLE: FACADE DETAILS - TERRACE + BALUSTRADE PROJECT ADDRESS: 903-921 BOURKE STREET, WATERLOO NSW 2017	CHECKED BY: FWAHMNDU PROJECT NO: 19-030 ISSUE DATE: 27/10/22 DWG NUMBER: D2.BS.NS.94.01 REVISION: E
--	---	--	---	--	--	---	---

375



ARCHITECT:
FIELDWORK
M/H Design Layer Pty Ltd
301/1100 Sturt Street
Melbourne VIC 3006
T: +61 (0)3 9681 2807
E: info@fieldwork.com.au

DATE:
24/10/22
21/10/22

DISCIPLINE:
COUNCIL RESPONSES
COUNCIL RESPONSES

NOTES:
1. ALL MATERIALS TO BE SUPPLIED BY THE CLIENT.
2. ALL MATERIALS TO BE SUPPLIED BY THE CLIENT.
3. ALL MATERIALS TO BE SUPPLIED BY THE CLIENT.
4. ALL MATERIALS TO BE SUPPLIED BY THE CLIENT.
5. ALL MATERIALS TO BE SUPPLIED BY THE CLIENT.
6. ALL MATERIALS TO BE SUPPLIED BY THE CLIENT.
7. ALL MATERIALS TO BE SUPPLIED BY THE CLIENT.
8. ALL MATERIALS TO BE SUPPLIED BY THE CLIENT.
9. ALL MATERIALS TO BE SUPPLIED BY THE CLIENT.
10. ALL MATERIALS TO BE SUPPLIED BY THE CLIENT.

ARCHITECT:
FIELDWORK
M/H Design Layer Pty Ltd
301/1100 Sturt Street
Melbourne VIC 3006
T: +61 (0)3 9681 2807
E: info@fieldwork.com.au

ARCHITECT:
FIELDWORK
M/H Design Layer Pty Ltd
301/1100 Sturt Street
Melbourne VIC 3006
T: +61 (0)3 9681 2807
E: info@fieldwork.com.au

ARCHITECT:
FIELDWORK
M/H Design Layer Pty Ltd
301/1100 Sturt Street
Melbourne VIC 3006
T: +61 (0)3 9681 2807
E: info@fieldwork.com.au

ARCHITECT:
FIELDWORK
M/H Design Layer Pty Ltd
301/1100 Sturt Street
Melbourne VIC 3006
T: +61 (0)3 9681 2807
E: info@fieldwork.com.au

ARCHITECT:
FIELDWORK
M/H Design Layer Pty Ltd
301/1100 Sturt Street
Melbourne VIC 3006
T: +61 (0)3 9681 2807
E: info@fieldwork.com.au

CHECKED BY:
FVAMHINDU
FVAMHINDU
PROJECT NO:
19-030
REVISION:
E

DRAWING TITLE:
FACADE DETAILS - FACING
BOURKE ST
PROJECT ADDRESS:
903-921 BOURKE STREET,
WATERLOO NSW 2017

SCALE:
1:200/8A3
ISSUE DATE:
27/10/22
DWG NUMBER:
D2.BSN-S.94.02

SCALE:
1:200/8A3
ISSUE DATE:
27/10/22
DWG NUMBER:
D2.BSN-S.94.02

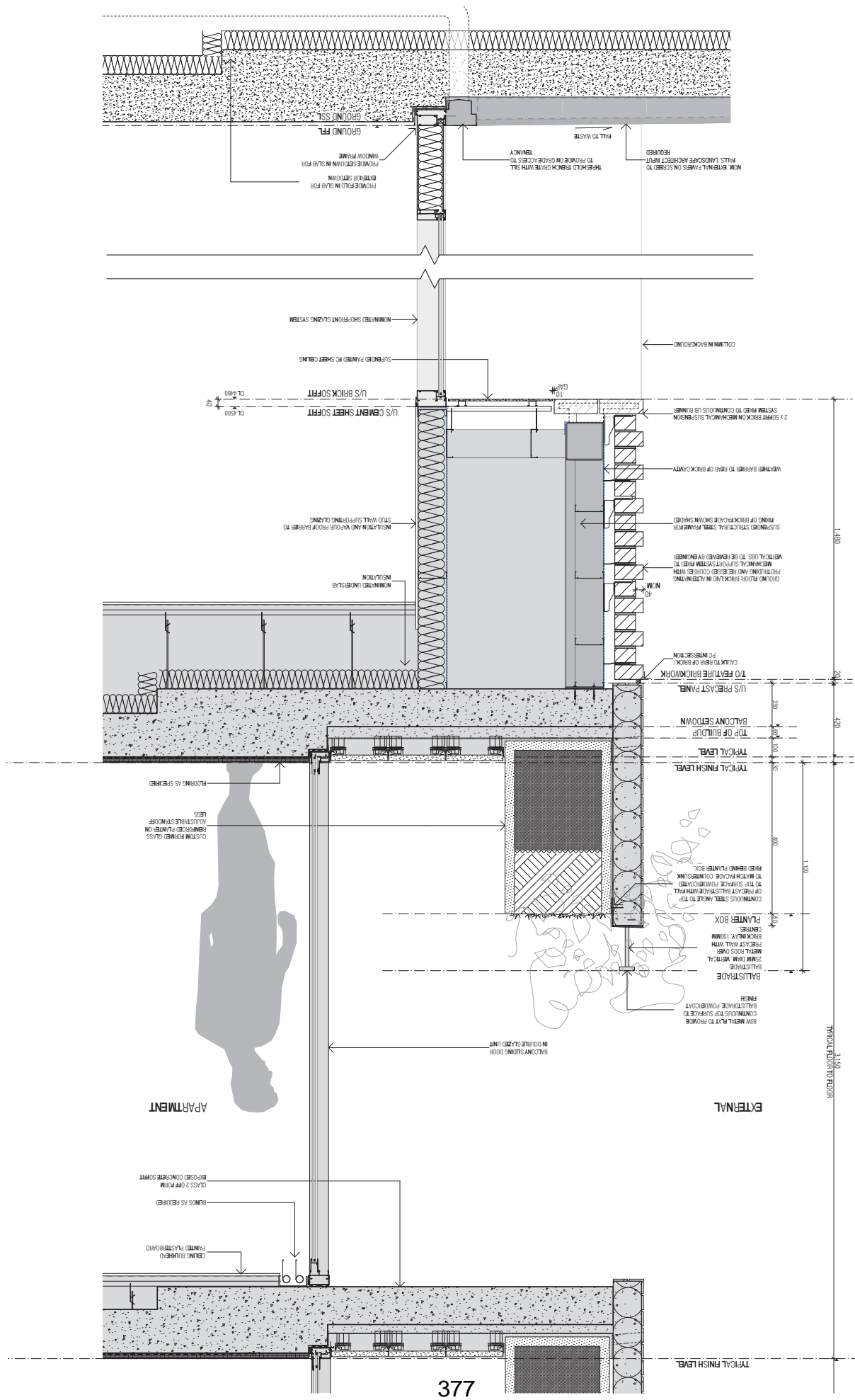
SCALE:
1:200/8A3
ISSUE DATE:
27/10/22
DWG NUMBER:
D2.BSN-S.94.02

SCALE:
1:200/8A3
ISSUE DATE:
27/10/22
DWG NUMBER:
D2.BSN-S.94.02

SCALE:
1:200/8A3
ISSUE DATE:
27/10/22
DWG NUMBER:
D2.BSN-S.94.02

SCALE:
1:200/8A3
ISSUE DATE:
27/10/22
DWG NUMBER:
D2.BSN-S.94.02

SCALE:
1:200/8A3
ISSUE DATE:
27/10/22
DWG NUMBER:
D2.BSN-S.94.02



CHECKED: FVAMHNDU
 DRAWN BY: FVAMHNDU
 PROJECT NO: 19-030
 ISSUE DATE: 27/10/22
 DWG NUMBER: D2.BSN-S.94.03
 REVISION: E

DRAWING TITLE:
FACADE DETAILS - FACING PLAZA
PROJECT ADDRESS:
903-921 BOURKE STREET, WATERLOO NSW 2017

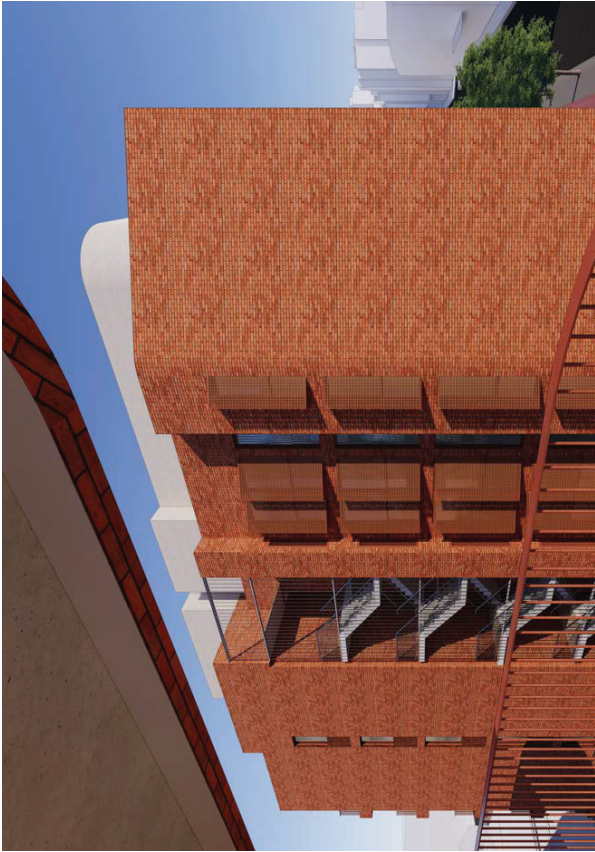
NOTES:
 1. ALL WORK TO BE DONE IN ACCORDANCE WITH THE NATIONAL BUILDING REGULATIONS 2011 AND THE NSW BUILDING ACT 2016.
 2. ALL WORK TO BE DONE IN ACCORDANCE WITH THE NSW BUILDING ACT 2016 AND THE NSW BUILDING REGULATIONS 2011.
 3. ALL WORK TO BE DONE IN ACCORDANCE WITH THE NSW BUILDING ACT 2016 AND THE NSW BUILDING REGULATIONS 2011.
 4. ALL WORK TO BE DONE IN ACCORDANCE WITH THE NSW BUILDING ACT 2016 AND THE NSW BUILDING REGULATIONS 2011.
 5. ALL WORK TO BE DONE IN ACCORDANCE WITH THE NSW BUILDING ACT 2016 AND THE NSW BUILDING REGULATIONS 2011.
 6. ALL WORK TO BE DONE IN ACCORDANCE WITH THE NSW BUILDING ACT 2016 AND THE NSW BUILDING REGULATIONS 2011.
 7. ALL WORK TO BE DONE IN ACCORDANCE WITH THE NSW BUILDING ACT 2016 AND THE NSW BUILDING REGULATIONS 2011.
 8. ALL WORK TO BE DONE IN ACCORDANCE WITH THE NSW BUILDING ACT 2016 AND THE NSW BUILDING REGULATIONS 2011.
 9. ALL WORK TO BE DONE IN ACCORDANCE WITH THE NSW BUILDING ACT 2016 AND THE NSW BUILDING REGULATIONS 2011.
 10. ALL WORK TO BE DONE IN ACCORDANCE WITH THE NSW BUILDING ACT 2016 AND THE NSW BUILDING REGULATIONS 2011.

1. ALL WORK TO BE DONE IN ACCORDANCE WITH THE NATIONAL BUILDING REGULATIONS 2011 AND THE NSW BUILDING ACT 2016.
 2. ALL WORK TO BE DONE IN ACCORDANCE WITH THE NSW BUILDING ACT 2016 AND THE NSW BUILDING REGULATIONS 2011.
 3. ALL WORK TO BE DONE IN ACCORDANCE WITH THE NSW BUILDING ACT 2016 AND THE NSW BUILDING REGULATIONS 2011.
 4. ALL WORK TO BE DONE IN ACCORDANCE WITH THE NSW BUILDING ACT 2016 AND THE NSW BUILDING REGULATIONS 2011.
 5. ALL WORK TO BE DONE IN ACCORDANCE WITH THE NSW BUILDING ACT 2016 AND THE NSW BUILDING REGULATIONS 2011.
 6. ALL WORK TO BE DONE IN ACCORDANCE WITH THE NSW BUILDING ACT 2016 AND THE NSW BUILDING REGULATIONS 2011.
 7. ALL WORK TO BE DONE IN ACCORDANCE WITH THE NSW BUILDING ACT 2016 AND THE NSW BUILDING REGULATIONS 2011.
 8. ALL WORK TO BE DONE IN ACCORDANCE WITH THE NSW BUILDING ACT 2016 AND THE NSW BUILDING REGULATIONS 2011.
 9. ALL WORK TO BE DONE IN ACCORDANCE WITH THE NSW BUILDING ACT 2016 AND THE NSW BUILDING REGULATIONS 2011.
 10. ALL WORK TO BE DONE IN ACCORDANCE WITH THE NSW BUILDING ACT 2016 AND THE NSW BUILDING REGULATIONS 2011.

ARCHITECT:
FIELDWORK
 MHD Design Pty Ltd
 10/100 Victoria Road
 Sydney NSW 2017
 T: +61 (0)2 9011 2807
 F: +61 (0)2 9011 1111
 www.fieldwork.com.au

ARCHITECT:
MHNDUNION
 MHD Design Pty Ltd
 10/100 Victoria Road
 Sydney NSW 2017
 T: +61 (0)2 9011 2807
 F: +61 (0)2 9011 1111
 www.mhndunion.com.au

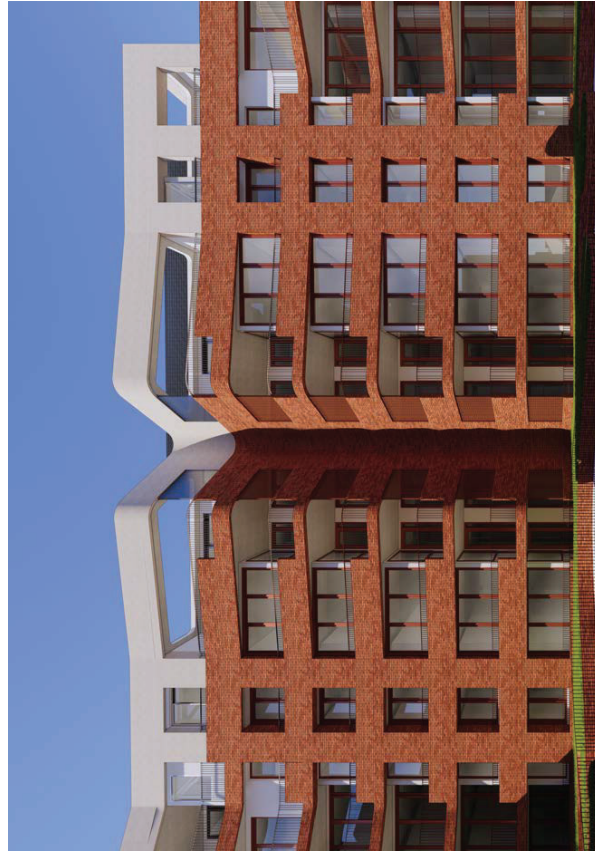
DATE: 20/10/22
 DISCUSSION: 21/10/22
 COUNCIL RESPONSES: 21/10/22
 COUNCIL REVISIONS: 21/10/22



View from D2(b) to D2(a) looking North



View from Oasis looking South



View from Oasis looking East



View from Oasis looking West

REV	DISCUSSION	DATE	ARCHITECT:
C	COUNCIL RESPONSES	20/10/22	FIELDWORK
D	COUNCIL RESPONSES	27/10/22	MH Design Unity Pty Ltd 15/150 Pittwater Rd Sydney NSW 2010 Australia T: +61 (0)2 9081 2801 E: info@fieldwork.com.au © FIELDWORK ARCHITECTS
E	COUNCIL RESPONSES		

ARCHITECT:
FIELDWORK
 MH Design Unity Pty Ltd
 15/150 Pittwater Rd
 Sydney NSW 2010
 Australia
 T: +61 (0)2 9081 2801
 E: info@fieldwork.com.au
 © FIELDWORK ARCHITECTS

ADMINISTRATIVE COPY OF APPROVED DECLARATION 4
 CLASS 4 - ALL MATERIALS AND CONSTRUCTIONS
 ARE TO BE IN ACCORDANCE WITH THE
 REQUIREMENTS OF THE BUILDING REGULATIONS
 2006 AND THE BUILDING CODE OF PRACTICE
 2006. THE BUILDING SHALL BE CONSTRUCTED
 IN ACCORDANCE WITH THE REQUIREMENTS
 OF THE BUILDING REGULATIONS 2006 AND
 THE BUILDING CODE OF PRACTICE 2006.
 CLASS 4 - ALL MATERIALS AND CONSTRUCTIONS
 ARE TO BE IN ACCORDANCE WITH THE
 REQUIREMENTS OF THE BUILDING REGULATIONS
 2006 AND THE BUILDING CODE OF PRACTICE
 2006. THE BUILDING SHALL BE CONSTRUCTED
 IN ACCORDANCE WITH THE REQUIREMENTS
 OF THE BUILDING REGULATIONS 2006 AND
 THE BUILDING CODE OF PRACTICE 2006.

NOTES:
 1. ALL MATERIALS AND CONSTRUCTIONS ARE TO BE IN ACCORDANCE WITH THE REQUIREMENTS OF THE BUILDING REGULATIONS 2006 AND THE BUILDING CODE OF PRACTICE 2006.
 2. THE BUILDING SHALL BE CONSTRUCTED IN ACCORDANCE WITH THE REQUIREMENTS OF THE BUILDING REGULATIONS 2006 AND THE BUILDING CODE OF PRACTICE 2006.
 3. ALL MATERIALS AND CONSTRUCTIONS ARE TO BE IN ACCORDANCE WITH THE REQUIREMENTS OF THE BUILDING REGULATIONS 2006 AND THE BUILDING CODE OF PRACTICE 2006.
 4. THE BUILDING SHALL BE CONSTRUCTED IN ACCORDANCE WITH THE REQUIREMENTS OF THE BUILDING REGULATIONS 2006 AND THE BUILDING CODE OF PRACTICE 2006.
 5. ALL MATERIALS AND CONSTRUCTIONS ARE TO BE IN ACCORDANCE WITH THE REQUIREMENTS OF THE BUILDING REGULATIONS 2006 AND THE BUILDING CODE OF PRACTICE 2006.
 6. THE BUILDING SHALL BE CONSTRUCTED IN ACCORDANCE WITH THE REQUIREMENTS OF THE BUILDING REGULATIONS 2006 AND THE BUILDING CODE OF PRACTICE 2006.
 7. ALL MATERIALS AND CONSTRUCTIONS ARE TO BE IN ACCORDANCE WITH THE REQUIREMENTS OF THE BUILDING REGULATIONS 2006 AND THE BUILDING CODE OF PRACTICE 2006.
 8. THE BUILDING SHALL BE CONSTRUCTED IN ACCORDANCE WITH THE REQUIREMENTS OF THE BUILDING REGULATIONS 2006 AND THE BUILDING CODE OF PRACTICE 2006.
 9. ALL MATERIALS AND CONSTRUCTIONS ARE TO BE IN ACCORDANCE WITH THE REQUIREMENTS OF THE BUILDING REGULATIONS 2006 AND THE BUILDING CODE OF PRACTICE 2006.
 10. THE BUILDING SHALL BE CONSTRUCTED IN ACCORDANCE WITH THE REQUIREMENTS OF THE BUILDING REGULATIONS 2006 AND THE BUILDING CODE OF PRACTICE 2006.

DRAWING TITLE:
PRIVACY SCREENING
PROJECT ADDRESS:
**903-921 BOURKE STREET,
 WATERLOO NSW 2017**

SCALE:
 NTS
ISSUE DATE:
 27/10/22
DWG NUMBER:
 D2.BSN-S.94.10
REVISION:
 19-030
CHECKED BY:
 FWAHMNDU
DRAWN BY:
 FWAHMNDU
PROJECT NO:
 19-030
REVISION:
 19-030
 E